



CATCH ME

A KILLER

PRODUCTION DESIGN MOODBOARD

Based on the book by Micki Pistorius

10 PART SERIES

Written and created by Amy Jephtha

FIRE UP FILMS

CAPE TOWN 1980's -1990's

Supporting Document

BRIEF : Production design a tv show taking the viewer on a journey through the life of South Africas first serial killer profiler. Her journey starts in the early 90’s in a pre and then post Apartheid South Africa

The viewer should be immersed in the specific period which was dated because of Sanctions in South Africa during that time.

Each episode takes place in difference Murder and robbery unit set up by the South African Police,

When watching the tv show you will notice a subtle change in the colour palette that represent the murderer and the victim

Budget : £750 000 per episode tv show

Challenges : This was a period show that was shot in multiple parts of south africa that had difference landscapes and vegetation. Each murder and robbery department had to look different but fit within a colour palette . This was achieved through paint and colour , fabrics furniture and period cars. All the crimes were true stories and as the production designer I was able to visit the archives of the Police department and recreate each scene in detail to the actual crime scenes as well as having direct contact with Micki Pistorius in order to get the details correct for each murder case.



COLOUR PALETTE BASE COLOUR - CATCH ME A KILLER

ART DEPT BUDGET 13-02-2023								
DESCRIPTION	NOTES	ALLOCATED BUDGET (v1)	BUDGET (v2)	BUDGET (v3)	BUDGET JAN 2023 (v4)	BUDGET (v5) Approved by GB	CURRENT SPEND	REMAINING
ART DEPARTMENT CREW		R6 300 000	R8 417 924	R8 878 200	R8 417 924			v5 - Current Spend
GRAPHICS & PRINTING		R150 000	R150 000	R150 000	R150 000	R150 000	R149 587	R413
PLAYBACK		R100 000	R100 000	R100 000	R100 000	R100 000	R99 607	R393
Office consumables		R180 000	R180 000	R180 000	R180 000	R180 000	R180 255	-R255
Casual Labour	SD ALLOCATED-B1				R12 000	R12 000	R12 000	R0
SET DRESSING 10 EPISODES	Crew Salaries (-R120K)	R2 200 000	R1 930 000	R1 932 560	R2 468 000	R2 608 000	R2 623 535	-R15 535
SD CONSUMABLES		R120 000	R120 000	R120 000	R120 000	R120 000	R30 651	R89 349
PROPS - 10 EPISODES	Crew Salaries (-R200K)	R1 200 000	R921 000	R871 000	R921 000	R967 881	R806 210	R161 671
PROPS CONSUMABLES		R60 000	R50 000	R75 000	R50 000	R50 000	R75 866	-R25 866
ANIMALS		R60 000	R60 000	R60 000	R60 000	R60 000	R44 654	R15 346
LAPTOP AND TOOL RENTALS (BOX)	SD BUDGET		R119 375		R128 750	R128 750	R128 750	R0
ARMOURY		R850 000	R400 000	R400 000	R400 000	R400 000	R378 320	R21 680
ACTION VEHICLES - RENTALS PER VEHICLE	Crew Salaries	R1 000 000	R1 000 000	R1 010 000	R1 180 000	R1 180 000	R1 070 989	R109 011
GREENS PURCHASES AND RENTALS / PROSTHETICS	Crew Salaries (-R87,350k)	R150 000	R62 650	R62 650	R62 650	R62 650	R60 770	R1 880
Construction LABOUR AND MATERIALS	Crew Salaries + Crew Salaries (-R100k)	R2 000 000	R2 561 003	R2 681 003	R2 681 003	R2 681 003	R2 317 162	R363 841
Construction Consumables	Moved into Labour	R120 000	R120 000				R328 909	-R328 909
Sfx - smoke and rain		R1 100 000	R450 000	R400 000	R445 000	R445 000	R440 521	R4 479
Losses and Damages							R0	R0
TOTAL		R9 290 000	R8 224 028	R8 042 213	R8 958 403	R9 145 284	R8 747 785	R397 499

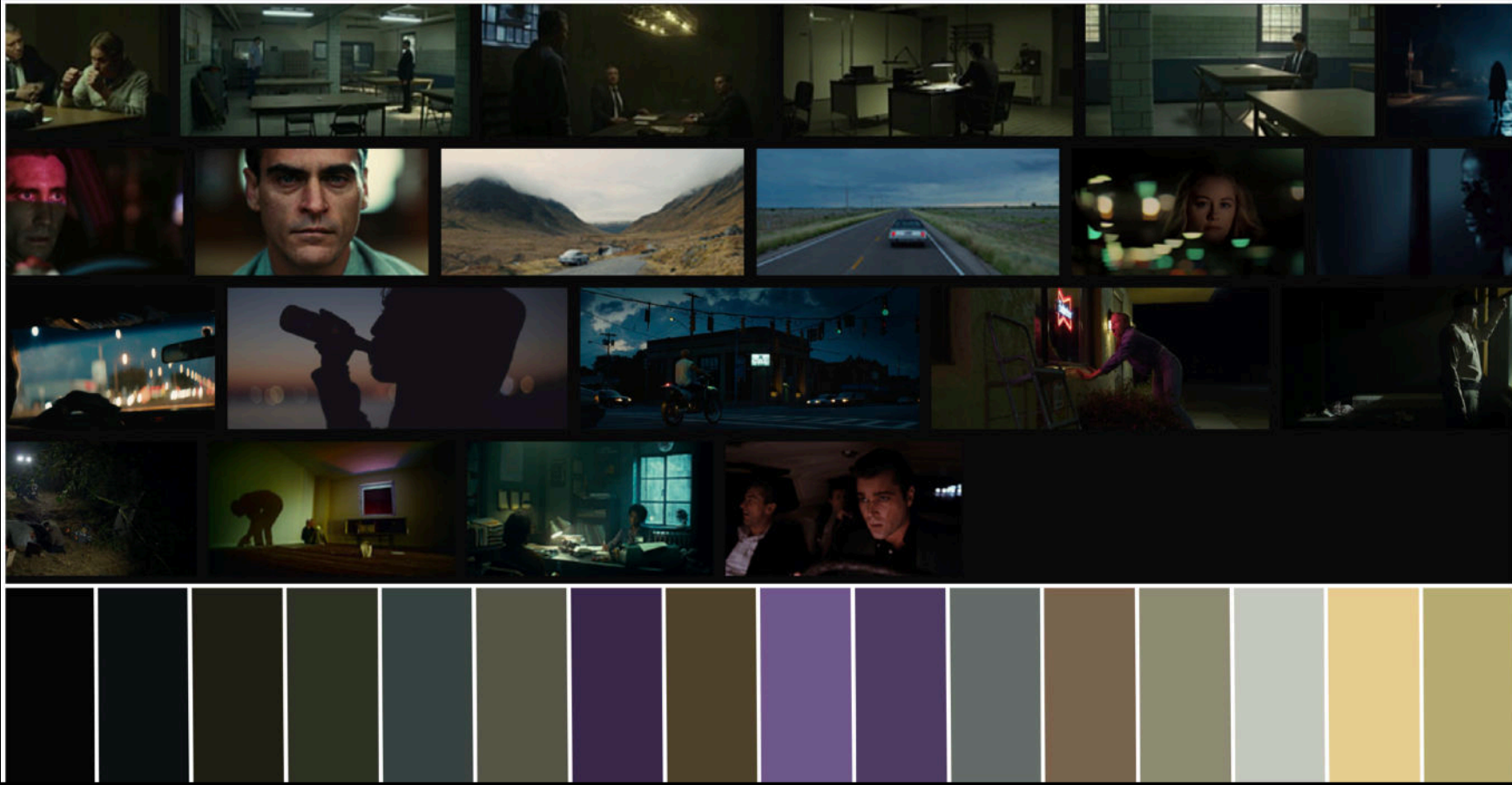
BUDGET - CATCH ME A KILLER



COLOUR PALETTE FOR CATCH ME A KILLER
EP 1,2



COLOUR PALETTE FOR CATCH ME A KILLER
EP 3,4



COLOUR PALETTE FOR CATCH ME A KILLER
EP 5,7



COLOUR PALETTE FOR CATCH ME A KILLER
EP 8,9



COLOUR PALETTE FOR CATCH ME A KILLER
EP 8,9



COLOUR PALETTE FOR CATCH ME A KILLER
EP 10



CMAK EP1 STILL- MICKI LECTURING ABOUT SERIEL KILLERS

This set is very early 90's the use of over head projectors in a dated lecture hall



CMAK EP6 STILL- DETECTIVE VISITING A 90'S INTERIOR HOME LOWER CLASS WHITE INTERIOR. 90 decor and furniture fills the interior space from floor to wall and the base colour palette



CMAK EP 1 STILL - 90'S CAPE TOWN AIR PORT INTERIOR , the old airport had to be recreated at the an old government customs house . 90's Signage and furniture are used in the interior space



CMAK EP 3 - MICKI APARTMENT INTERIOR 90'S

This space was recreated based on references and notes from the author to help represent her as a character that was very plain and simple - with the use of mid modern century furniture this helped tell that story of "Micki at home"



CMAKEP 1-9 STILL - MORGUES

Multiple morgues were design and build in existing space that were empty



CMAK EP3/4 BRIXTON MURDER AND ROBBERY
A Johannesburg based unit - the colour palette of this interior
was salmon green and gold (the colour of the gold capital)



CMAK EP 8/9/10 STILL DURBAN MURDER AND ROBBERY

A costal murder and robbery unit set in a the green part of south africa w
murders taking place in sugar cane fields



CMAK EP 3 STILL - Police SAPF - CRIME SCENES

Under strict guidance from detectives from the 90's the stand by team recreated the dated details of crime scenes and what materials and kits were used