

Great Expectations

Written by Stephen Knight

PRODUCTION DESIGN by Sonja Klaus

SET DECORATION by Ellie Pash

Great Expectations is a band two budget show produced by FX, Disney and the BBC. 'Based' on Charles Dicken' s novel of the same name, penned beautifully by Stephen Knight to create 6 episodes for mainstream television.

This was Knight' s vision of the story, corruption, acknowledgement of on-going slave trade (even though it was abolished in Britain in 1807), opium addiction all set in a dusty crowded London, contrasting with the misty open marshland of Pip' s youth.

His writing is so expressive he takes you to the places he writes about with ease, designing is a dream and his formulation of the characters is simply so expressive.

The budget was tight and we had to chop and change quite a lot at the beginning, especially as this show was going to involve big interiors with fire and large square sail boats.

Designing a new take on Great Expectations was a particularly challenging task as it had been done many times. The book talks of crumbling wedding cake eaten by rats, with torn curtains and shuttered windows. Yes, Stephen' s writing can be dark (as witnessed on Taboo) but in the darkness there is also texture, light and storytelling. From the start this series needed something that would make viewers sit up and take notice, Great Expectations really needed to have Great Expectations !

Making choices about builds on stages versus builds on location, it was about 50:50, building the larger rooms and corridors on stages for Miss Haversham' s world, plus quite a lot of Pip' s. Building on location was also necessary as this was not a small story, London was Cosmopolitan a metropolis and we needed to show that contrast between the two worlds.

VISUAL # 008

INT. THE THREE JOLLY BARGEMEN

LOCATION: OXENFORD FARM

ISSUED: 24/02/2022

GREAT
EXPECTATIONS.

GREAT
EXPECTATIONS.

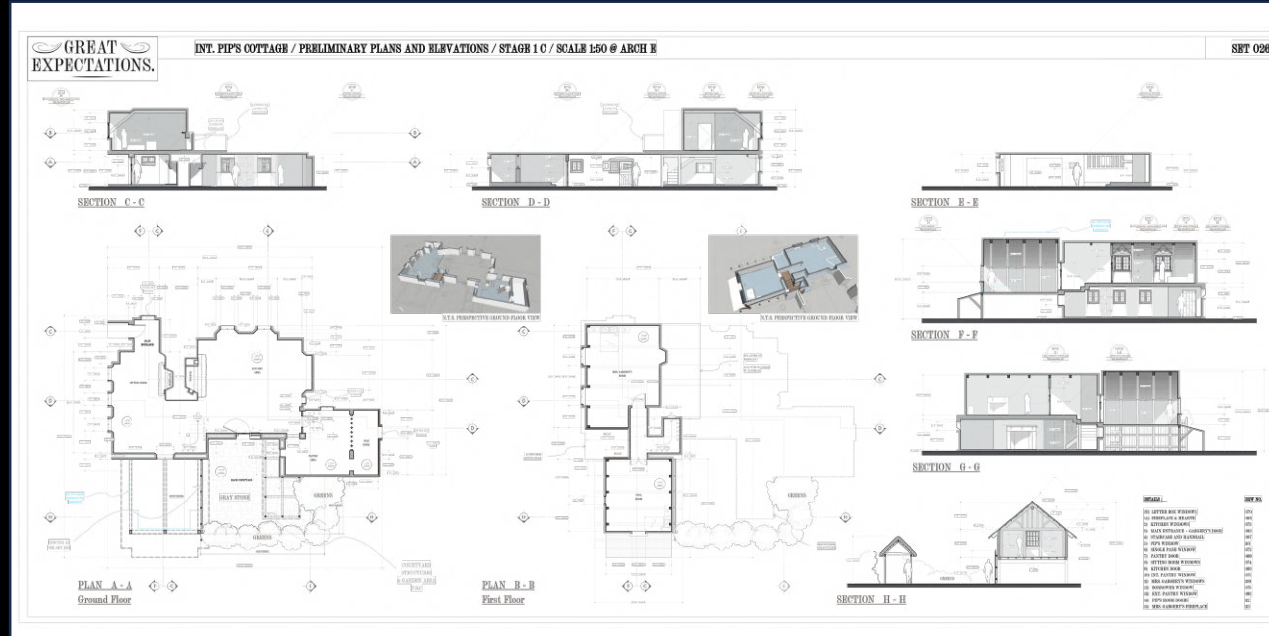
VISUAL # 009

INT. THE THREE JOLLY BARGEMEN

LOCATION: OXENFORD FARM

ISSUED: 04/03/2022

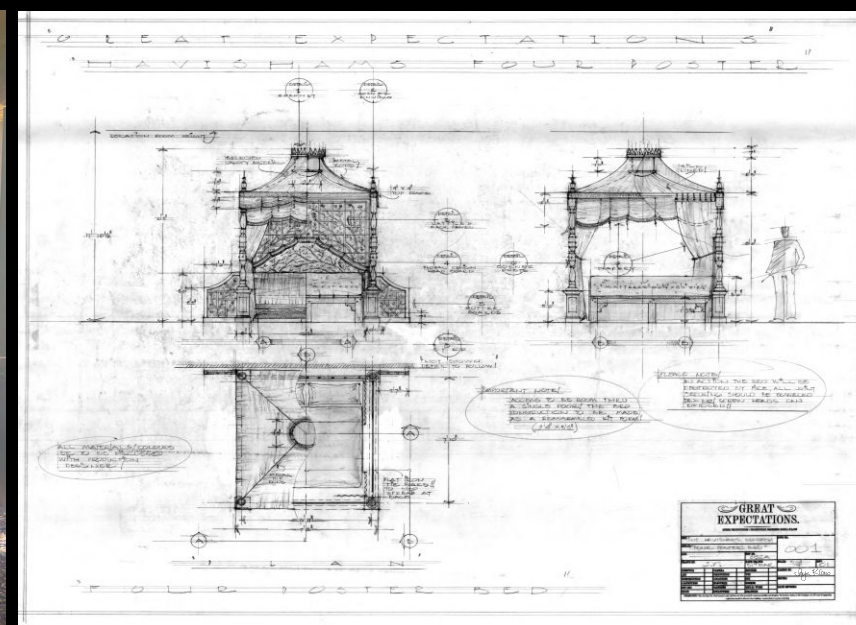


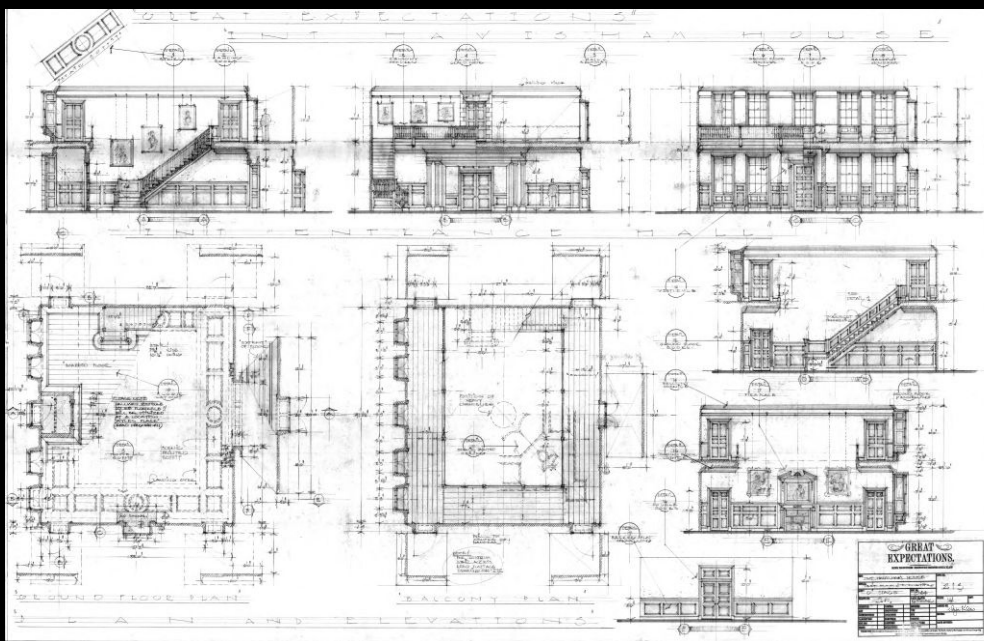
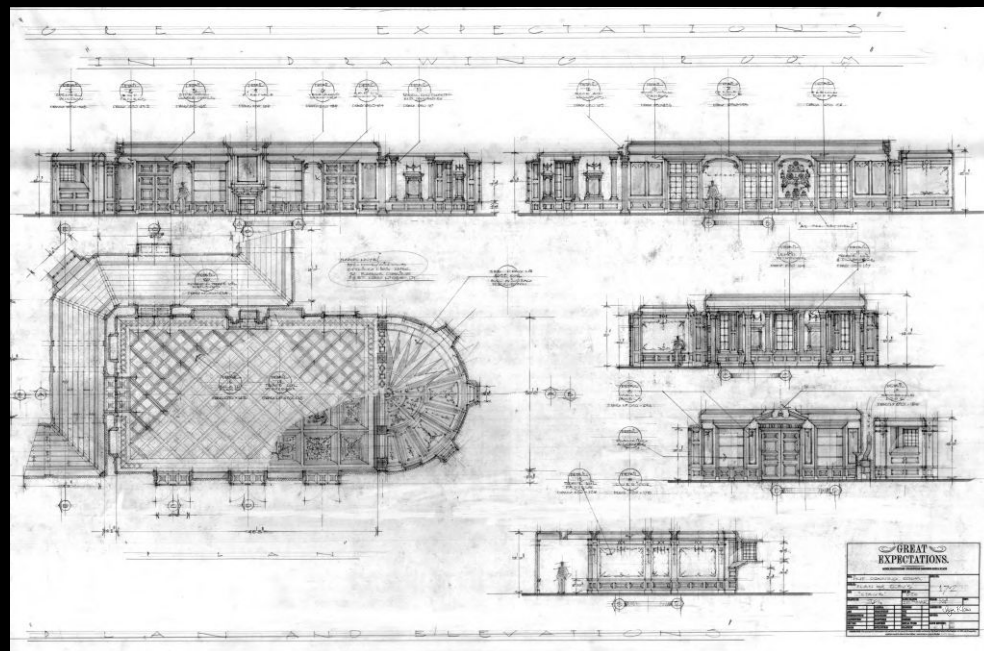


Great Expectations

EXT Satis House / INT Ms Havishams Dressing Room









Great Expectations

INT Ms Havishams Hallway



