

FOR YOUR CONSIDERATION

BEST PRODUCTION DESIGN



Wonka

PRODUCTION DESIGNER
NATHAN CROWLEY

SUPERVISING ART DIRECTOR
TOM BROWN
TOBY BRITTON

SET DECORATOR
LEE SANDALES

Wonka

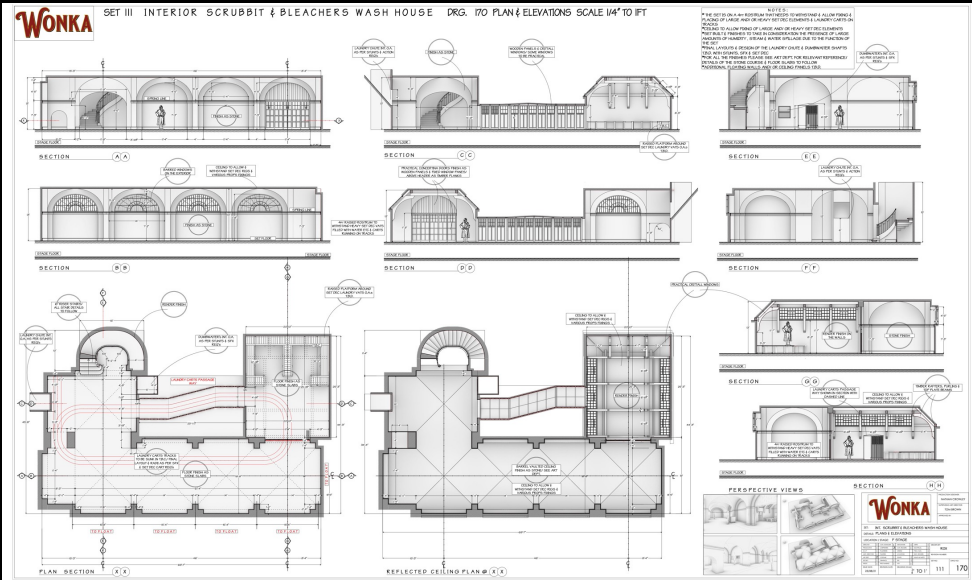
"Willy Wonka, the eccentric chocolatier from beyond our realm, inhabits a world where chocolate reflects his unique perspective and the impossible is possible. To evoke this whimsical world, the film's design team weaved old and new methodologies, combining large-scale set builds, painted backings, Locations and CGI top-ups above traditional matte lines to create a surreal landscape where dreams come true. The result is a tapestry of old and new, nostalgia and modernity, where anything is possible and the impossible is simply a matter of perspective.

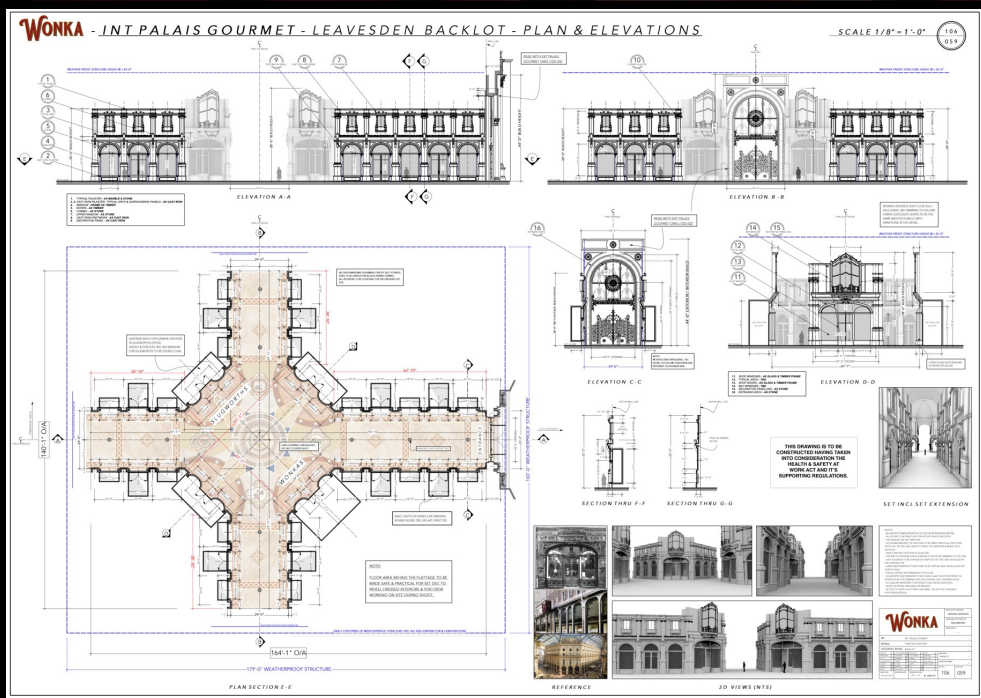
The design of the film is a silent guide, inviting the audience to lose themselves in Willy Wonka's whimsical world. From the towering chocolate shop to the candy gardens, the film's design is a feast for the senses that seamlessly immerses the audience in a world where magic is real and imagination runs wild.

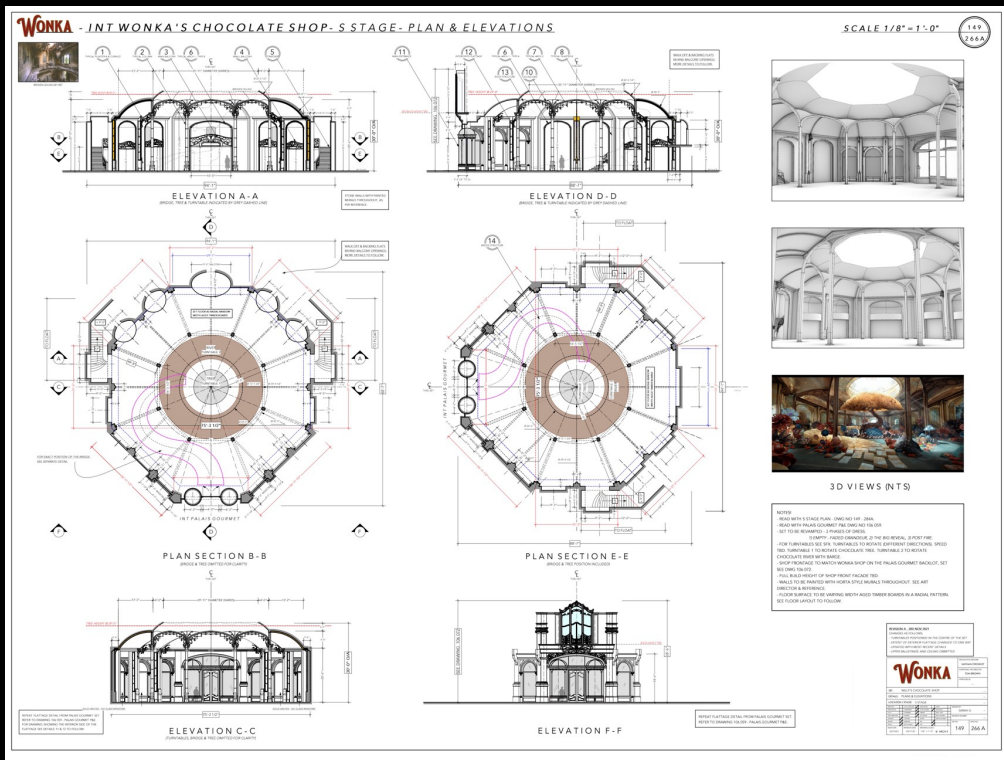
Nathan Crowley

'WONKA' INT. SCRUBBIT AND BLEACHER WASH HOUSE

SET DRAWING ROXI ALEXANDROU, CONCEPT BY MARK BUTTON







'WONKA'

EXT. TOWN SQUARE

SET DRAWING ANDREA BORLAND, CONCEPT GERARD DUNLEAVY

