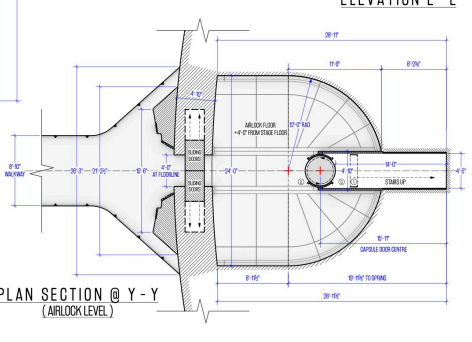
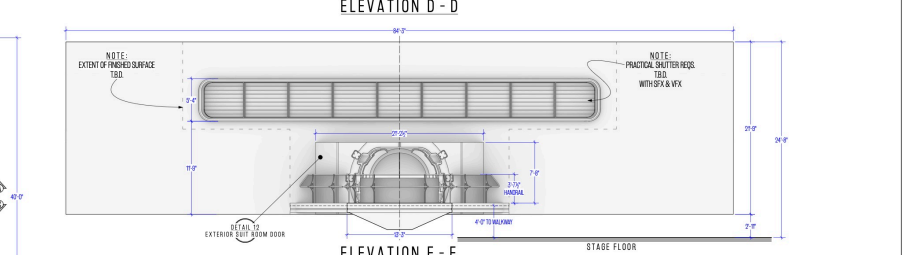
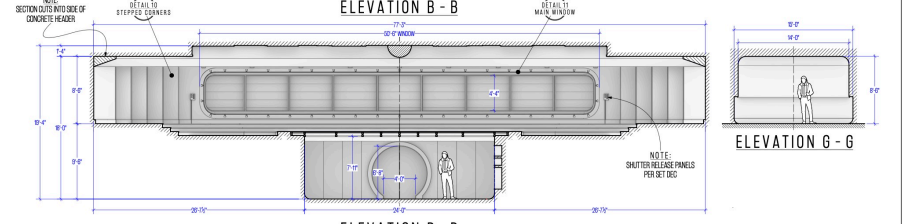
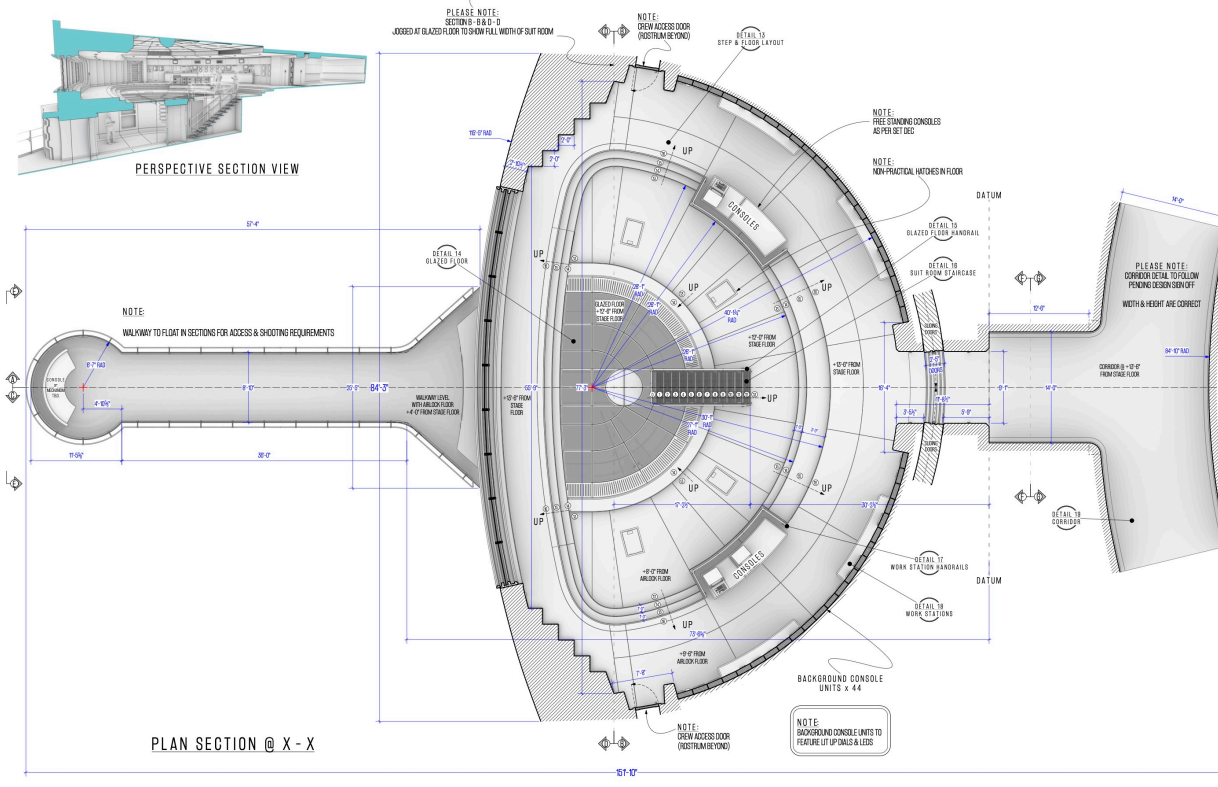
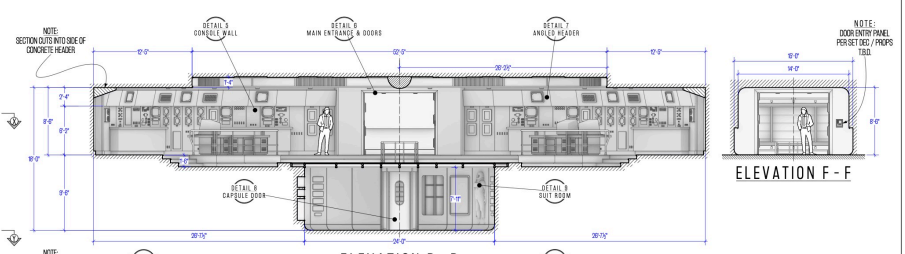
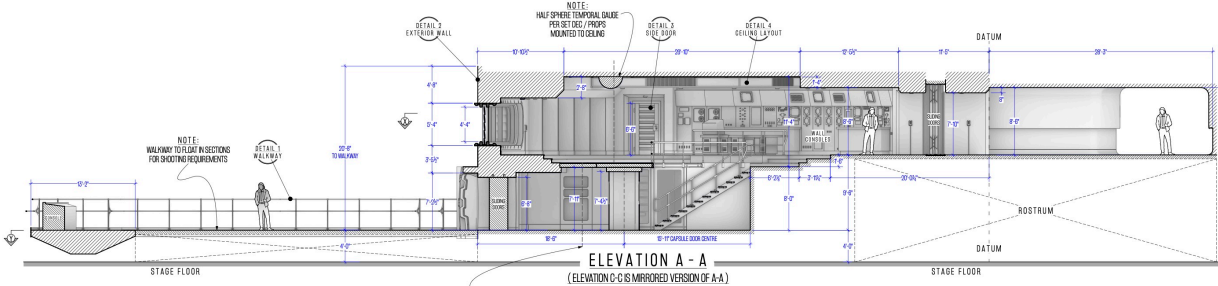






PATRICK RUHN-SACHS · LIAM GEORGESEN · JOSHUA VIGOR



*** DRAWING LIST ***

(DETAILS TO FOLLOW)

- DETAIL 1 - WALKWAY & PLATFORM
- DETAIL 2 - EXTERNAL WALL
- DETAIL 3 - SIDE DOORS
- DETAIL 4 - CEILING LAYOUT
- DETAIL 5 - CONSOLE WALL
- DETAIL 6 - MAIN ENTRANCE & DOORS
- DETAIL 7 - ANGLE HEADER
- DETAIL 8 - CAPSULE DOOR
- DETAIL 9 - SUIT ROOM (ARLOCK)
- DETAIL 10 - STEPPED CORNERS
- DETAIL 11 - MAIN WINDOW & SHUTTERS
- DETAIL 12 - EXT. SUIT ROOM DOOR
- DETAIL 13 - STEP & FLOOR LAYOUT
- DETAIL 14 - GLAZED FLOOR
- DETAIL 15 - GLAZED FLOOR HANDRAIL
- DETAIL 16 - SUIT ROOM STAIRCASE
- DETAIL 17 - WORKSTATION HANDRAILS
- DETAIL 18 - WORKSTATIONS
- DETAIL 19 - CORRIDOR

*** NOTES ***

- SET CONSISTS OF CONTROL ROOM, SUIT ROOM WALKWAY & CORRIDOR
- SET ART DEPT FOR ALL FINISHES
- WALKWAY & PLATFORM TO FLOAT FOR SHOOTING REQUIREMENTS
- SET INCLUDES THREE SET DOORS:
 1. MAIN DOORS INTO SET
 2. CAPSULE DOOR INTO SUIT ROOM
 3. OUTER SUIT ROOM DOORS TO ARLOCK
- SHUTTER MOVEMENT REQUIREMENTS ON MAIN WINDOW TO BE DISCUSSED WITH VFX, SPA & ART DEPT

ARCHITECT

INT. TEMPORAL CORE CONTROL ROOM

DETAIL: PLAN & ELEVATIONS

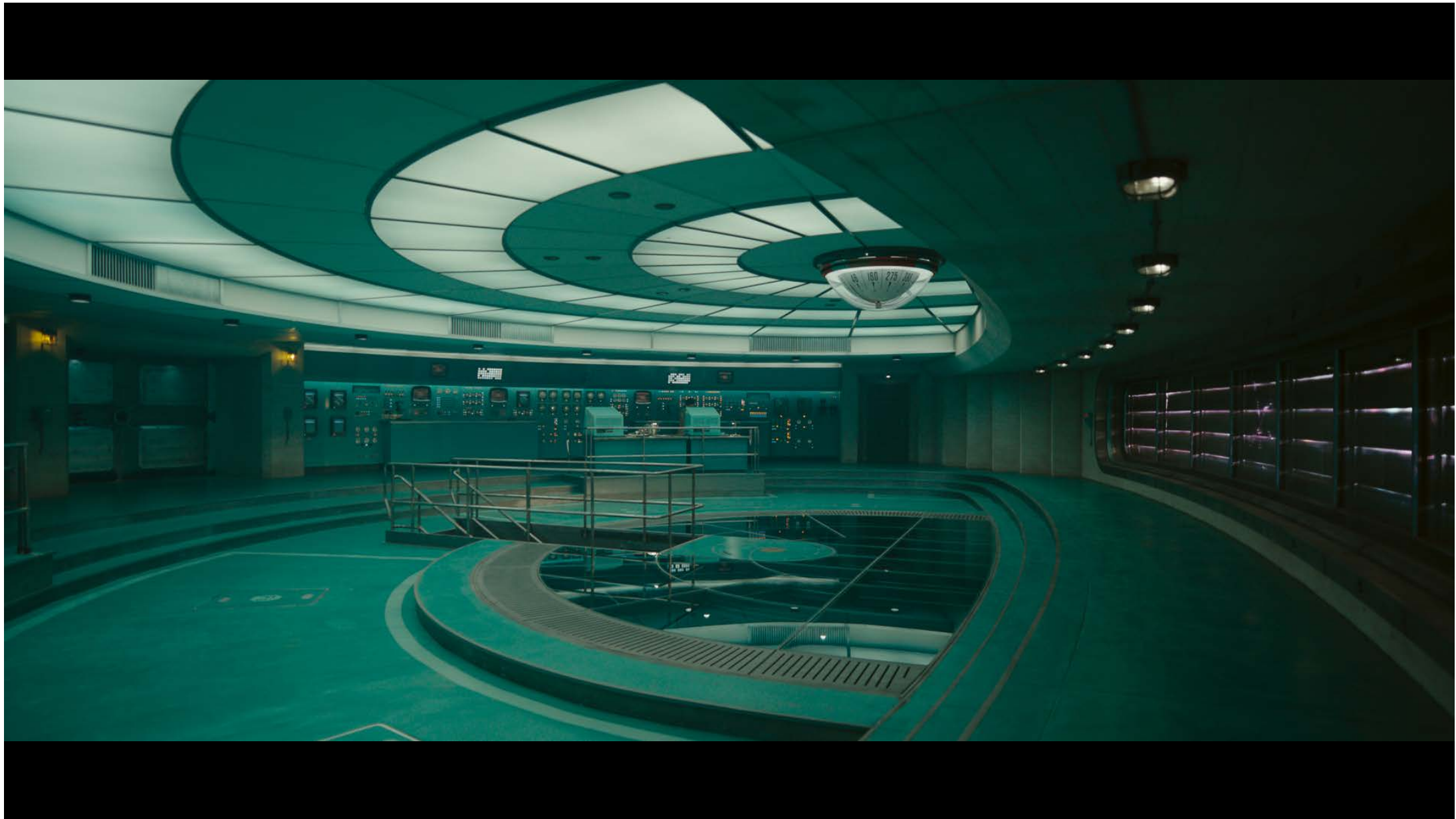
SCALE: 1/4" = 1'-0"

DATE: 22/04/24

REV: 01

106

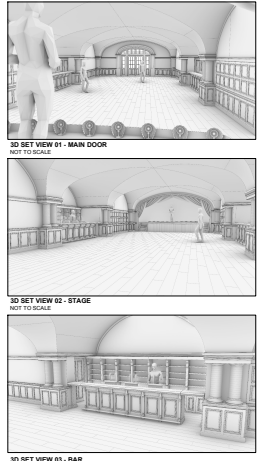
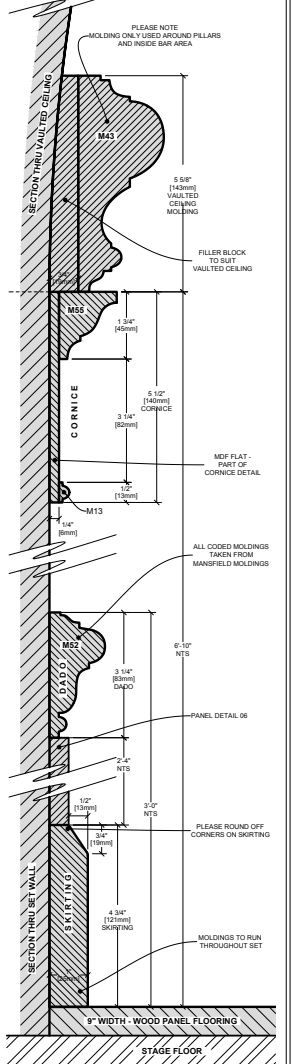
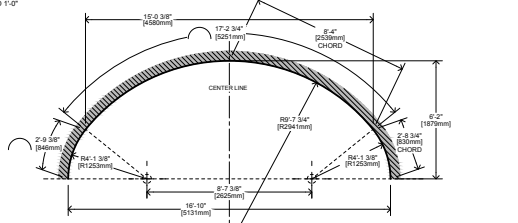
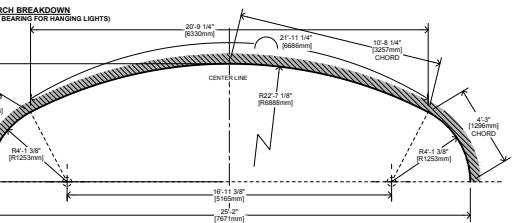
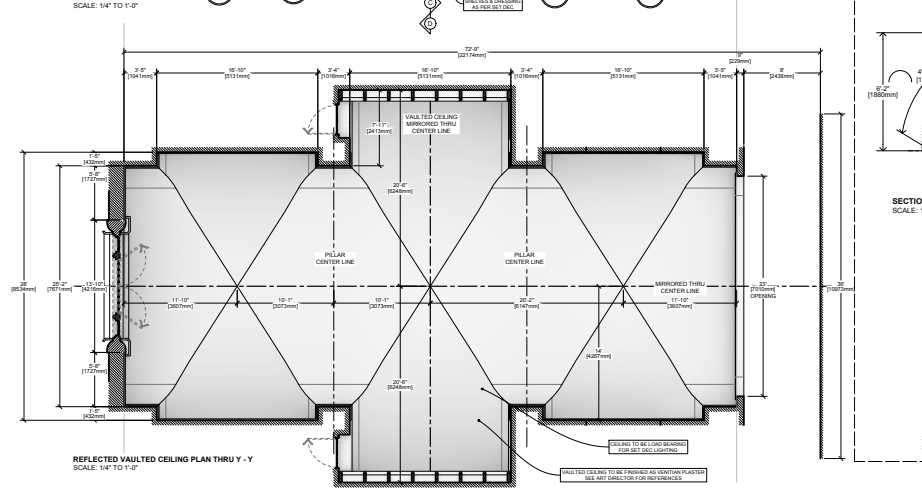
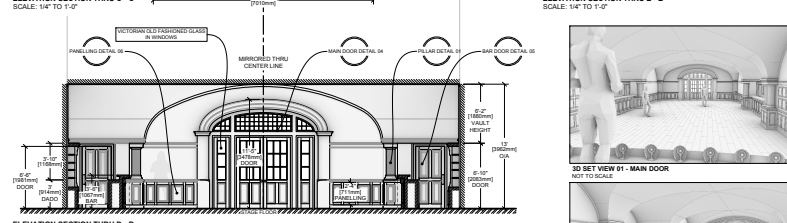
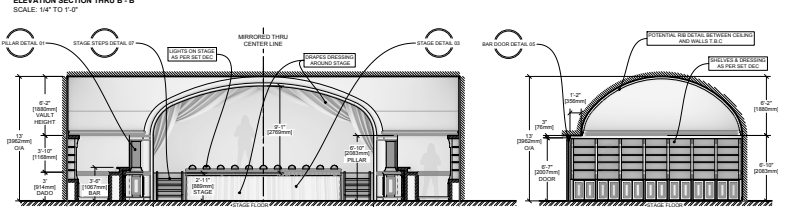
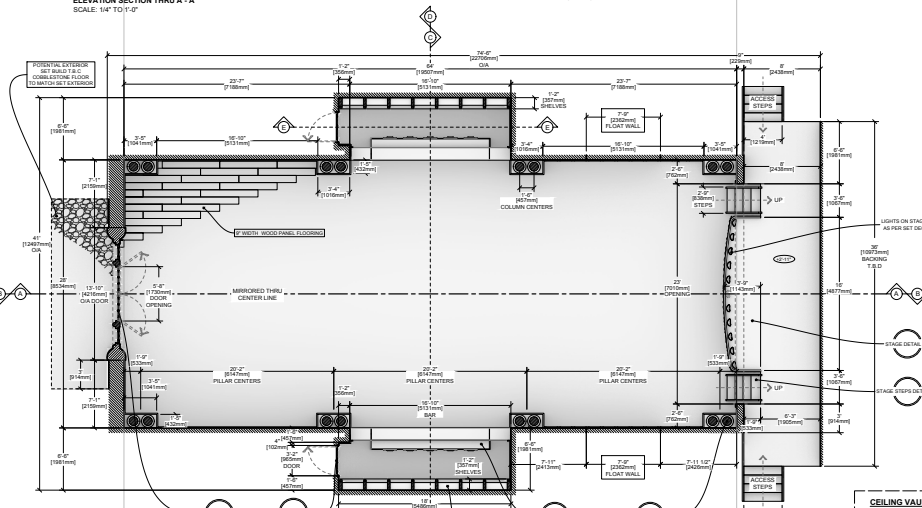
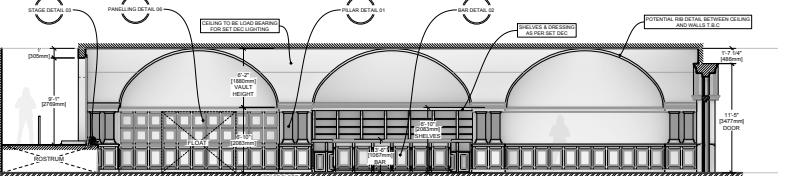
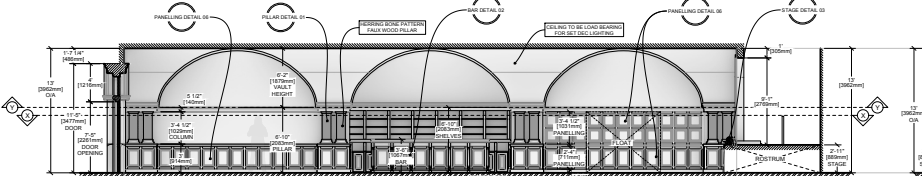
01











PLEASE NOTE:

- CARRY ACCESS STEPS REQUIRED ON BOTH SIDES OF STAGE. (SEE STAGE DETAIL 03)
- 2 1/2" FLAY WALLS AS INDICATED. HIDDEN WITH IN PANELING.
- VAULTED CEILING TO BE LOAD BEARING.
- VICTORIAN CLOID FASHIONED GLASS REQUIRED IN DOOR. DETAIL TO FOLLOW.
- PILLARS TO HAVE 2" FAUX HERRING BONE WOOD PATTERN CARVED COLUMNS - DETAIL TO FOLLOW.
- 8" PILLARS (SEE PILLAR DETAIL 01)
- POTENTIAL RIS DETAIL BETWEEN CEILINGS AND WALLS - T.B.C.
- 9" WIDTH WOOD BOARDS FOR FLOORING.
- MOLDINGS TO RUN AROUND SET AS INDICATED. MOLDING DESIGNS TAKEN FROM MANSFIELD CATALOGUE.
- STAGE BACKING - T.B.C DRAPES OR FLAT - PLEASE DISCUSS.
- POTENTIAL EXTERIOR SET BUILD T.B.C.

FLOORING: SEE SET ARCHITECT FOR ALL FINISHES.

- FLOOR AS AGED WOODEN BOARDS
- CEILING AS VENTIAN PLASTER
- WALLS AS PLASTER PAINTED.
- MOLDINGS & PANELING AS WOOD FINISH
- DOOR BURROUND MOLDING & PILLARS AS STONE.

GRAPHICS:

- MATERIAL / PATTERNED CEILING DETAIL
- PLEASE DISCUSS ANY ADDITIONAL GRAPHICS NEEDED.

SET DEC:

- INDICATED WALL TO WALL SHELVES BEHIND BAR
- HANGING LIGHTS THROUGHOUT SET
- DOOR / FURNITURE / 2" BAR DOORS & MAIN DOOR
- DRESSING FOR BAR
- "NAIVE" STYLE TABLE & CHAIR DRESSING TO FULL FLOOR SPACE.
- INDICATED SLAM SHELL LIGHTS ON STAGE X 11
- DRAPES DRESSING AROUND EDGE OF STAGE & STAGE CURTAINS.

PRG/LIGHT:

- HANGING CEILING LIGHTS - AS PER SET DEC
- STAGE LIGHTS AS PER SET DEC.

DETAILS TO FOLLOW:

- PILLAR DETAIL 01
- BAR DETAIL 02
- STAGE DETAIL 03
- MAIN DOOR DETAIL 04
- BAR DOOR DETAIL 05
- PANELING DETAIL 06
- STAGE STEPS DETAIL 07

		SET: EXT CHICAGO'S WORLD FAIR DETAIL: BEER HOFBRÄUHAUS P&E		SET No: 307 DRAWING No: 001	
DATE: 11/07/22 DRAWN BY: MULLY HANSEN CHECKED BY: MULLY HANSEN	DATE: 11/07/22 DRAWN BY: MULLY HANSEN CHECKED BY: MULLY HANSEN	DATE: 11/07/22 DRAWN BY: MULLY HANSEN CHECKED BY: MULLY HANSEN	DATE: 11/07/22 DRAWN BY: MULLY HANSEN CHECKED BY: MULLY HANSEN	DATE: 11/07/22 DRAWN BY: MULLY HANSEN CHECKED BY: MULLY HANSEN	DATE: 11/07/22 DRAWN BY: MULLY HANSEN CHECKED BY: MULLY HANSEN