

Riot Games - Wild Rift



Production Designer - Dan Betteridge

Art Director - Kate McConnell

Set Decorator - Anna Lynch Robinson

Filmed at Leavesden

Riot Games - Supporting Statement

Introduction

Originally briefed as a live event, a lockdown in China necessitated the move to an online media broadcast. The air date was hard set on the 9th to coincide with the final with the last shoot day just 5 days beforehand, giving no time in post production for any VFX. However this was a fantastic opportunity to explore some old fashioned in-camera techniques such as:

Traditional Glass Matte Paintings

Miniatures and Forced Perspective Backings

Mechanical Rigs for quick in camera effects

Anamorphic live action set pieces and architectural projection mapping.

Aesthetics

Based loosely on Singaporean elements and subculture we created a journey through the city set to an original musical piece by the artist TKay. We attempted to create a journey blending the old and the new of Singapore, with switches between hues and colour temperatures as she makes her way through the city

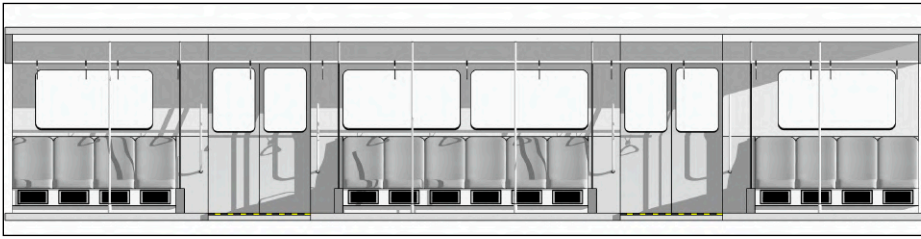
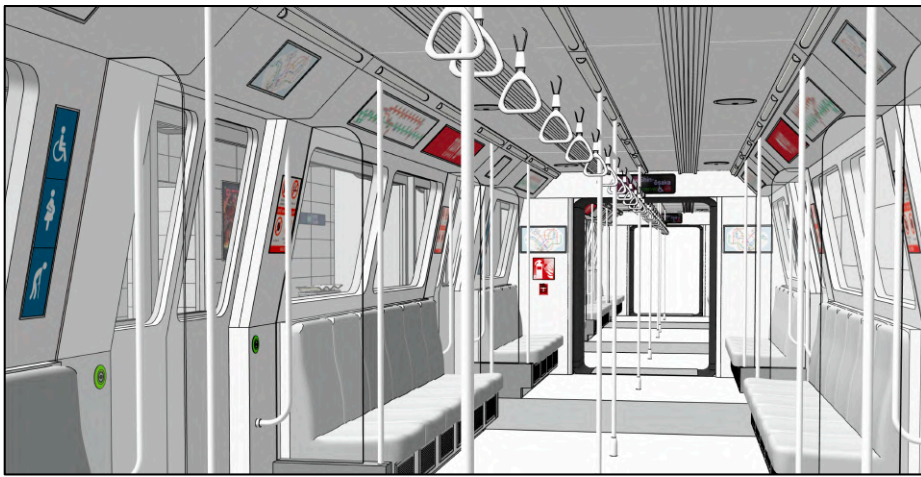
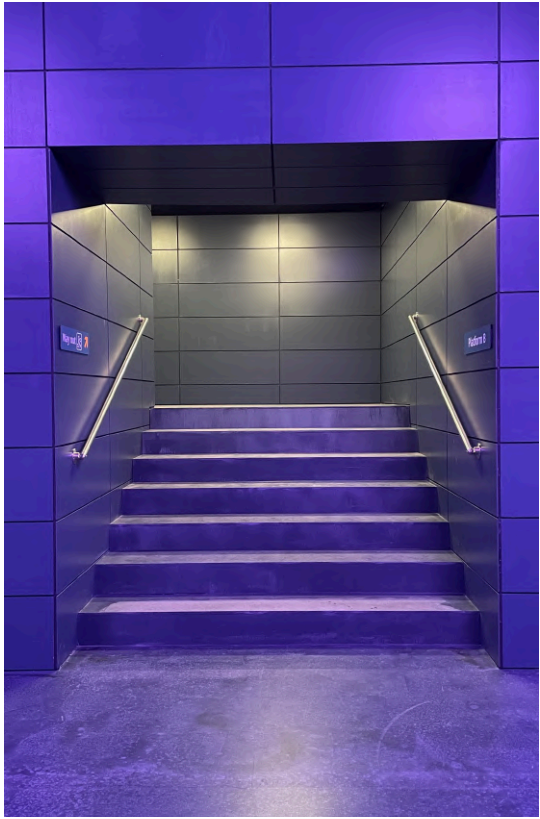
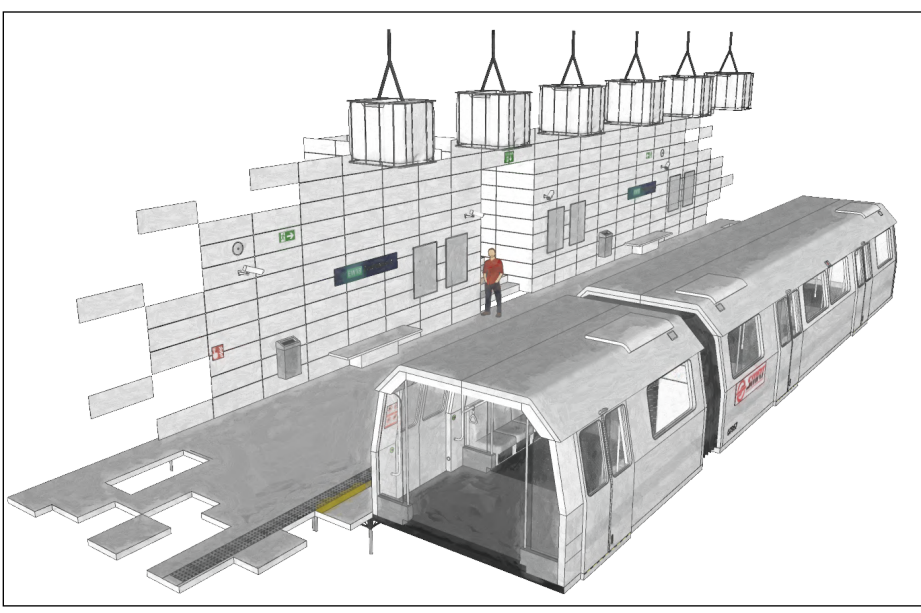
Technical

All elements had to be achieved in camera due to the lack of time for VFX (Clean up only), this was a fantastic brief as we were allowed to bring traditional film making elements onto set and work with various rigs and techniques that are usually usurped by post production.

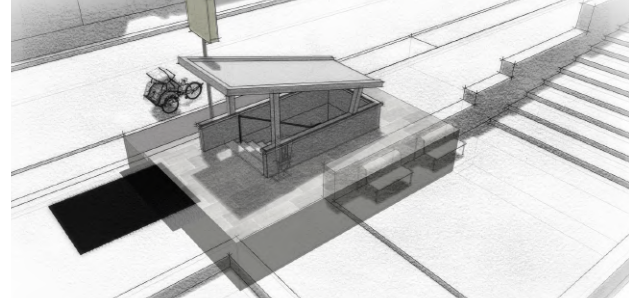
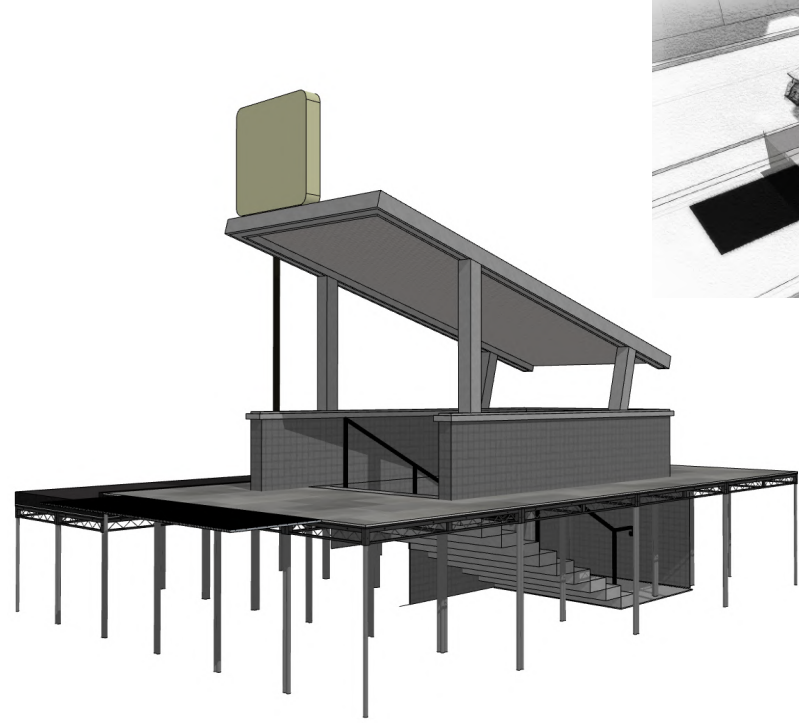
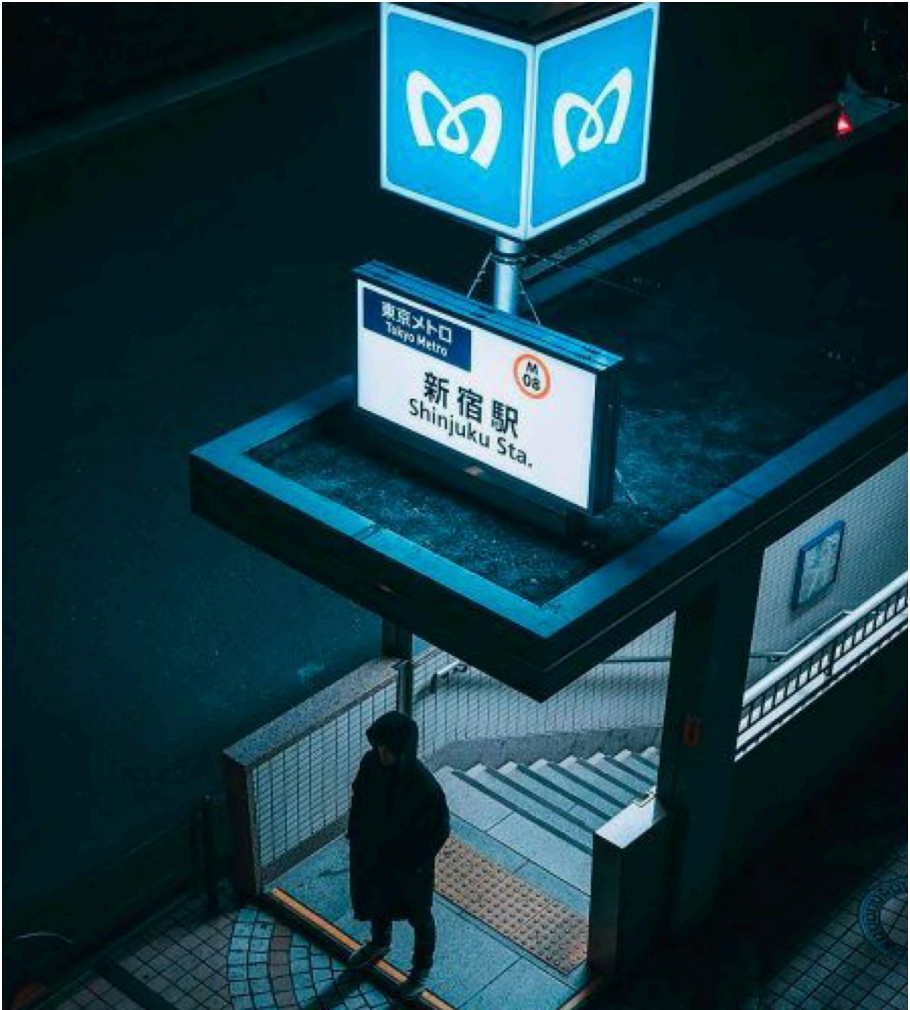
Challenges

Timing 1 month from Brief to Wrap; at the start of the project a Director had not yet been found or a script written which made things a little more difficult in the initial stages....

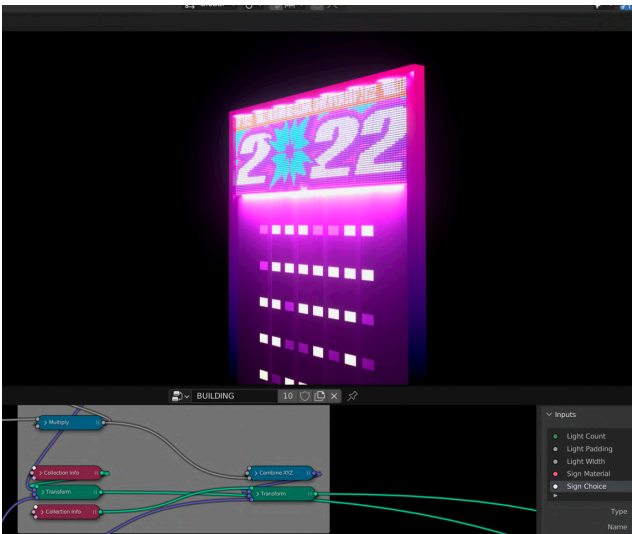
This was truly a dream job with a fantastic team with the lack of time actually feeding into the piece in a positive way



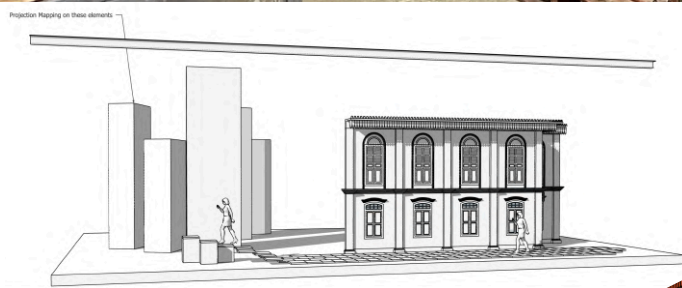
Construction of Subway Train and Platform, front 1/3 of carriage hung on chain tackles to simulate movement between the carriages and scenic painting in the rear set on a sliding rig to give a further perspective shift within the frame



Live action set composited in camera using traditional glass painting techniques



Projection Mapping Nodal Graphics

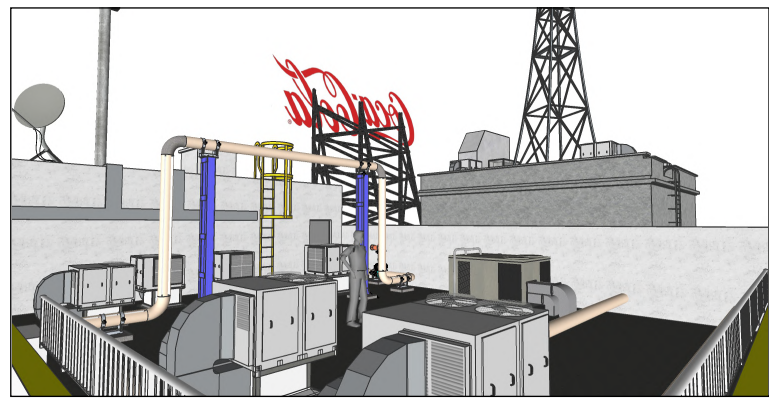
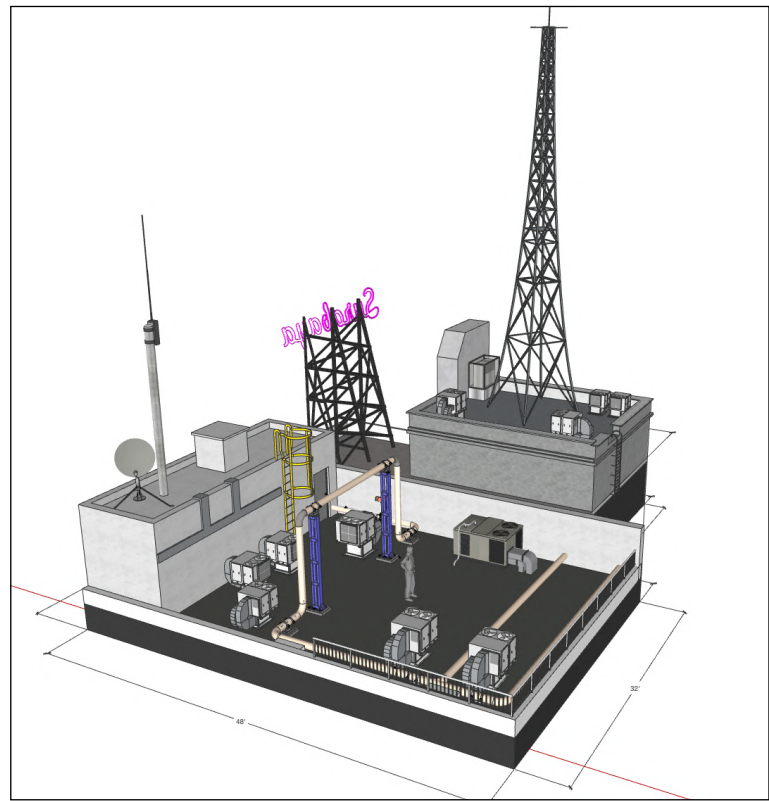


Traditional Singaporean building theatrically segueing into modern projection mapped tower blocks

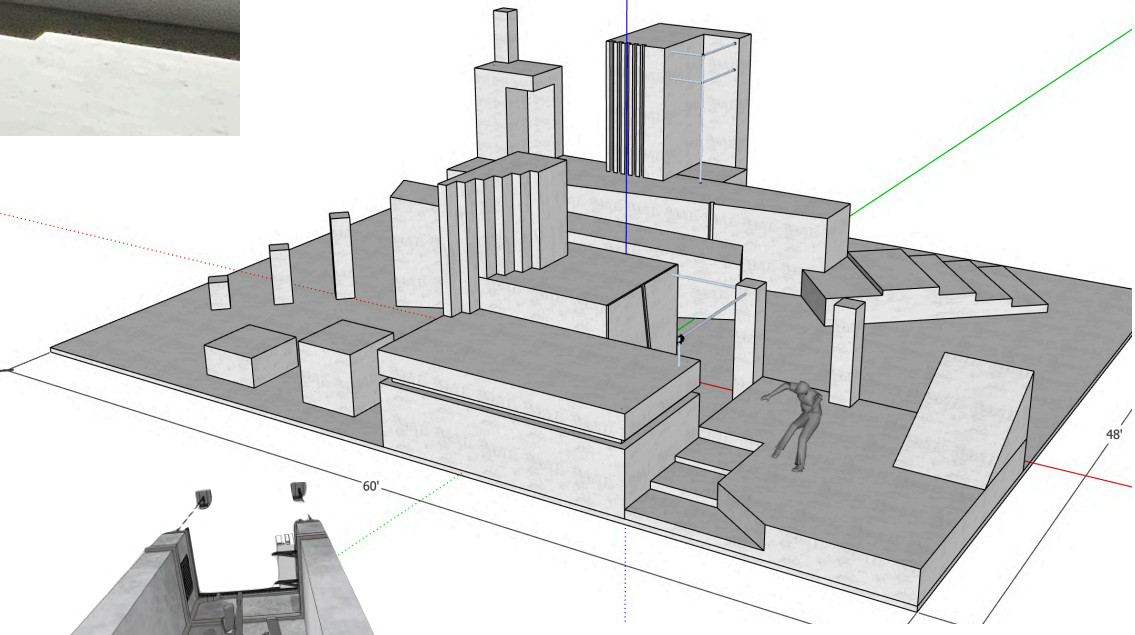
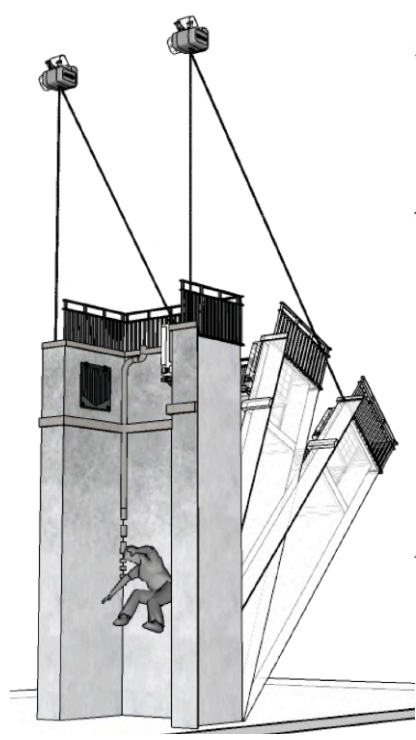


20'+ High Blocks for in camera projection mapping

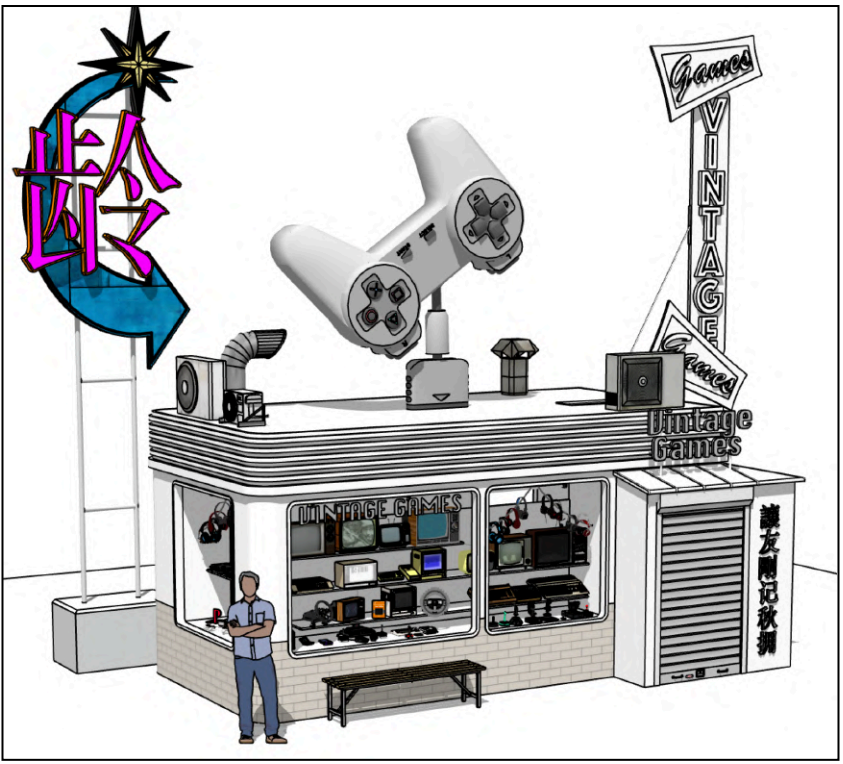
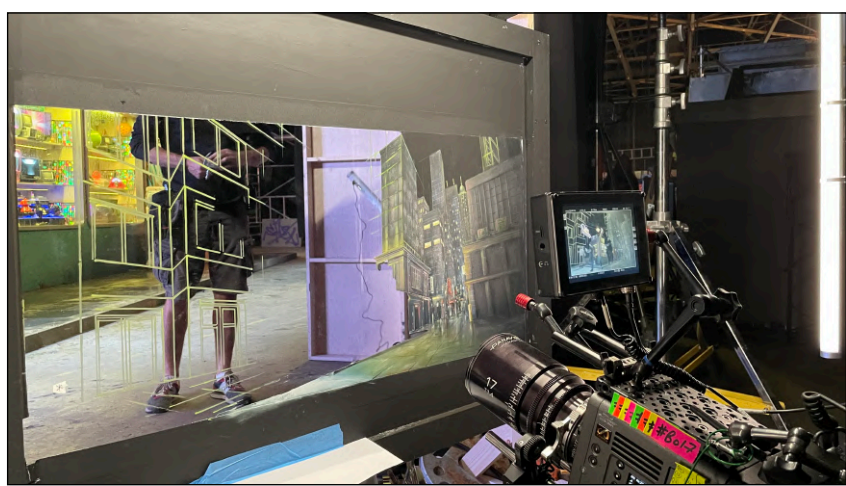




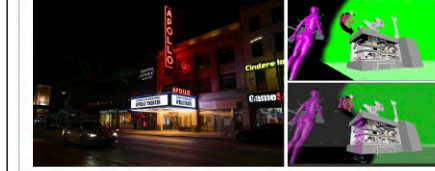
Multi Level
Rooftop Set/
Staging for
Dancers, set build
drawings and
reference sheets



Brutalist inspired Parkour Set, designed provide many alternative camera positions and physical options and to withstand dynamic loading from all angles whilst keeping the artists safe.



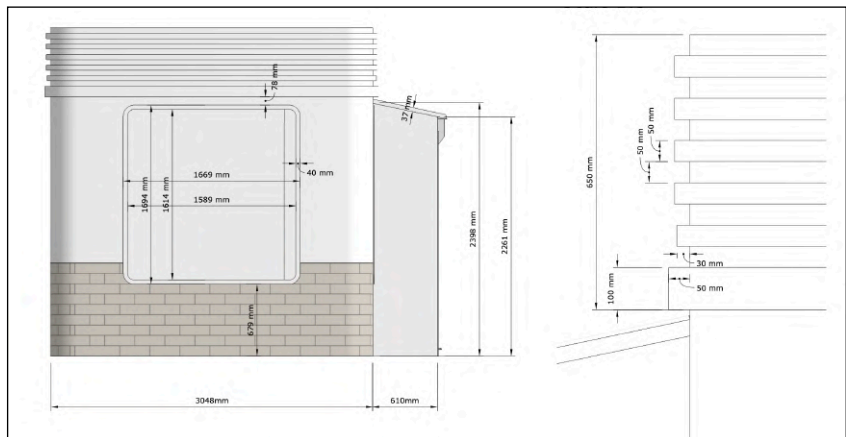
Kiosk is set in the middle of a neighbourhood that has been heavily built up over the years and is surrounded by skyscrapers reaching upwards and with strong lines receding into the distance, the building on the left of the kiosk are simple black outlines and fade into more detailed designs to the right of frame



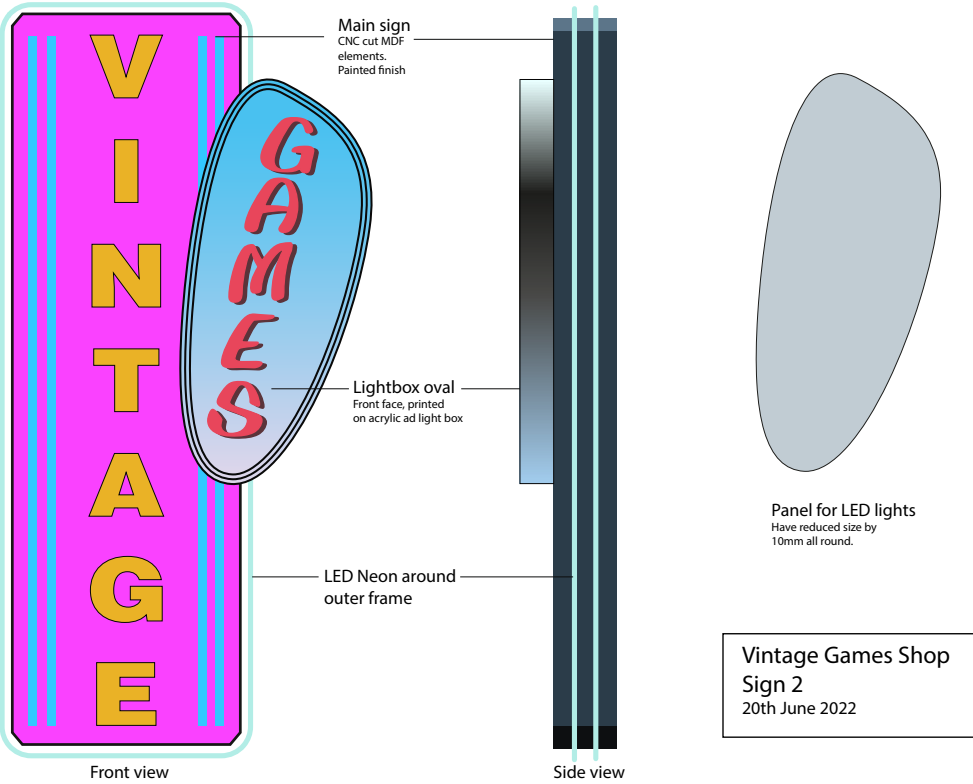
Matte Painting fades in from black on the left to allow Tikay to enter frame and appear next to the kiosk (fade indications on the left) - Black is clear and Green is painting

Kiosk Matte Painting Reference - Lighting

Riot Games



Vintage Games Shop, Glass Paintings and mechanical and electronic effects



Sukan Sukan Sukan Sukan Sukan Sukan



CHEN ADALAH RAJA BARU KATA WEE

Barry Seton

Pemegang akan hadiah di sini bahawa ia akan diwajibkan memakainya kepada...

yang menganggarkan seks amat diperlukan tidak bergolak lelaki harta sebab hari yang anggun terkejut itu membolehkan diperlihatkan. Suisatan...

PERLAWANAN BESAR DITANGGUHKAN

CHEN H CHENG... Ser instrumen temannya yang menganggarkan seks amat diperlukan tidak bergolak lelaki harta sebab hari yang anggun terkejut itu membolehkan diperlihatkan. Suisatan...

KEMALANGAN? Telahkah anda cedera di tempat kerja, dalam lalu lintas kemalangan, perjalanan atau serangan?

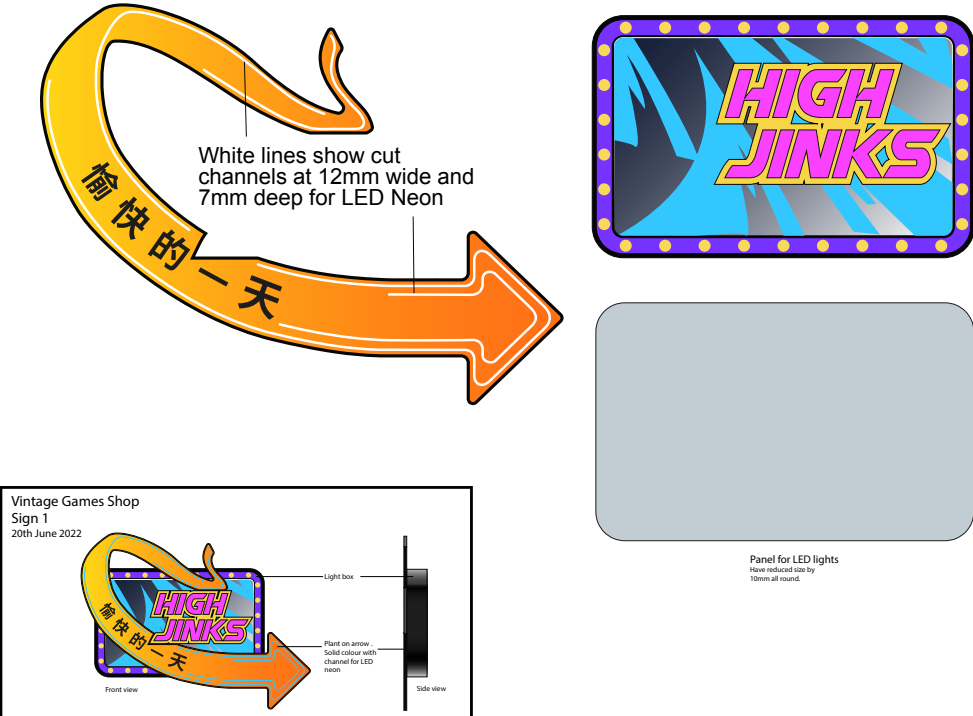
Kami boleh membantu anda mendapat pampasan... 08001 57 05 05

JURUBANK YANG PALING DIHORMATI KEJAJAHAN HEBAT DARI RAHMAT PENGKHIANAT BAKER SKANDAL KOTA GADIS SEKOLAH BERANI KEJAJAN STOK KEROSAKAN RIBUT

Bintang filem yang mempunyai bakat terpendam

SARUNG BAKUL! PELAKON TERHEBAT SINGAPURA BERTUKAR MENJADI PEMBUAT BAKUL!

Persembahan akan hadiah di sini bahawa ia akan diwajibkan memakainya kepada...



EXT. NIGHT MARKET_ WINGS LOGOS

VEGETARIAN FOOD

经济米粉

請自助 SELF SERVICE

BEE HOON

炒饭(早市) Fried Rice \$2

橄榄炒饭(全日 Olive Fried Rice) \$1

SUPER \$1.30

ANTIQUE ARTS AND CRAFTS

Traditional Meal

\$1\$1 \$2\$2 \$3\$3

杏鮑菇

黑木耳 \$1.30

花菇 \$2.50

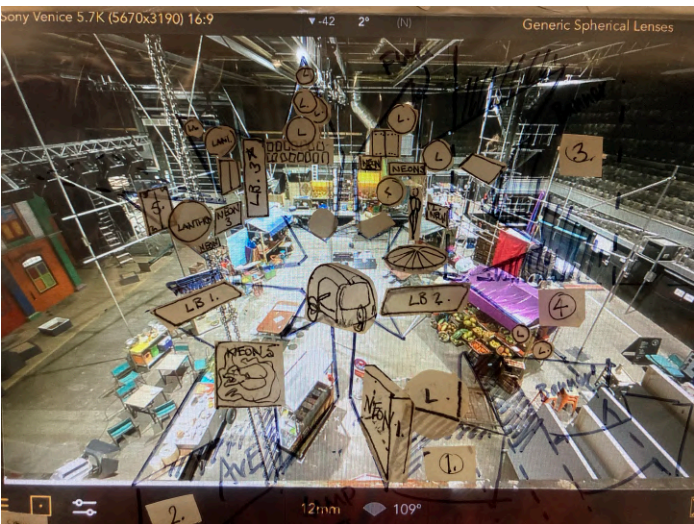
銀耳 \$3.50

膳食纖維: 7.4g | 膳食纖維: 5.4g | 膳食纖維: 5.1g

EXT. NIGHT MARKET_ LB2 BEEF NOODLE BOWL

牛肉面

Graphics Examples, a mixture of English and Malay



Final Street Market Set, the action and scenery resolves to an in-camera anamorphic set piece to make up the wild rift logo at the end. This had to be built to camera from a 25' tower - see images on the left