

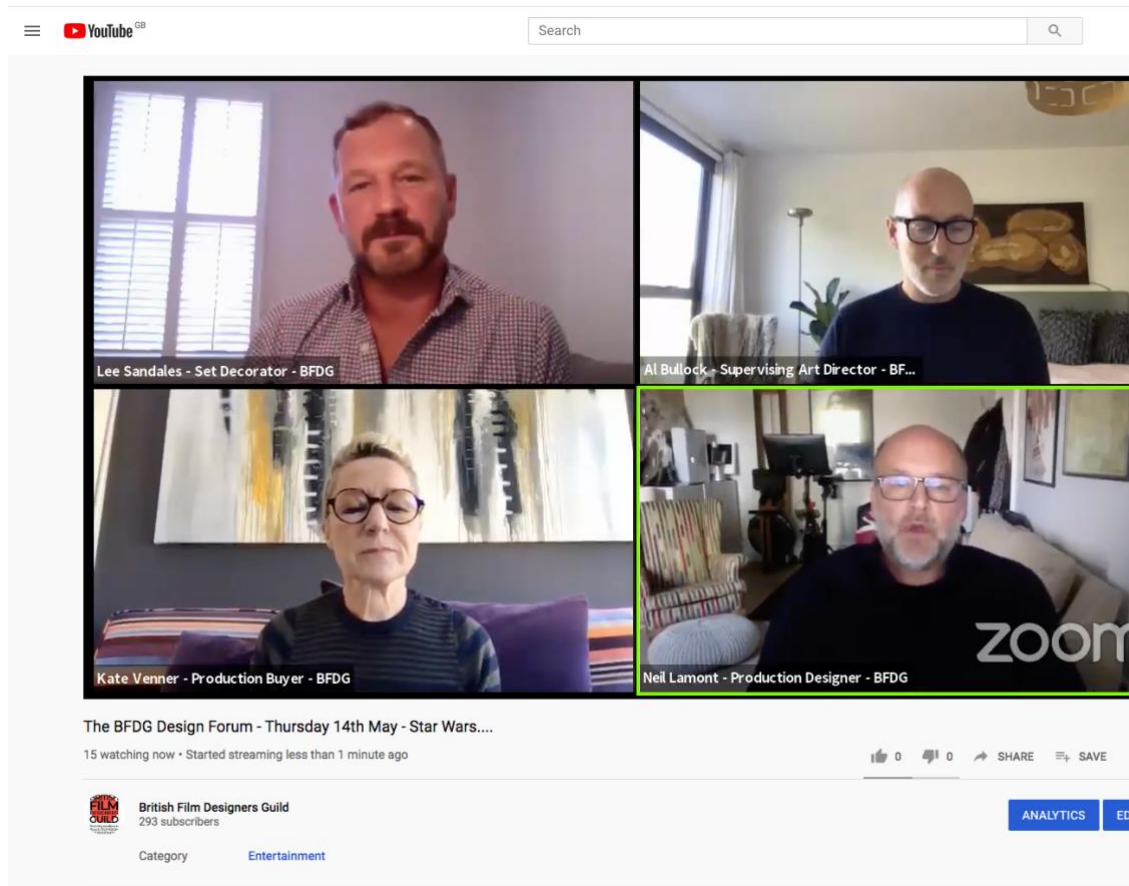
NEWSLETTER

IN THE BFDG MAY NEWSLETTER

- *BFDG DESIGN FORUM - WATCH OUR LATEST DESIGN FORUM AND REGISTER FOR NEXT WEEK*
- *NFTS VIRTUAL GRADUATE SHOW*
- *BFDG LOCKDOWN SHORTS - MAKE A SHORT ABOUT WHAT YOU'VE BEEN DOING IN LOCKDOWN*
- *SIMON BOWLES - WORKING FROM HOME LIFE*
- *VECTORWORKS - INFORMATION AND SUPPORT*
- *COVID-19 UPDATE - RETURNING TO WORK SAFELY*
- *MEMBERS NEW RELEASES*
- *MEMBERS' AVAILABILITY LIST*



THE BFDG DESIGN FORUM



Our fourth live BFDG Design Forum Cinematographers took place via Zoom and YouTube last night 'Star Wars: Building a Galaxy Not Far From London' with Production Designer Neil Lamont and his Art Department team from the Star Wars films, 'Rogue One' and 'Solo'.

Al Bullock - Supervising Art Director

Lee Sandales - Set Decorator

Paul Hayes - Construction Manager

Kate Venner - Production Buyer

Thank you to everyone who took part and all of those members who were watching.

If you missed last night's live stream then you can still view it on the BSC YouTube channel here: <https://youtu.be/ZLK7hcn5avo>

JOIN US NEXT WEEK, THURSDAY 21 MAY - 6PM...

BFDG DESIGN FORUM

"Taboo or Not?"
Sonja Klaus & Guests
Talk About Their Collaboration

Thursday 21st May 2020 – 6PM

Sonja Klaus (BFDG)
Production Designer & Host

Dean Baker
Executive Producer

Tim Bricknell
Producer

Mark Patten (BSC)
DOP

Olly Robinson
First Assistant Director

Joanna Eatwell
Costume Designer

Q&A streaming LIVE on Zoom
Webinar, BFDG YouTube Live.

**BRITISH
FILM
DESIGNERS
GUILD** **BFDG**
Promoting excellence in FILM & TELEVISION Art Departments

WATCH THE 'TABOO' TRAILER HERE: <https://youtu.be/W1fiiqrKuc>

REGISTER NEXT WEEK'S DESIGN FORUM HERE:

https://us02web.zoom.us/webinar/register/WN_n1CnYJS7TIKkLo7o87B1KA

Future Design Forums

We are busy putting together a series of Design Forums to be streamed via Zoom and YouTube.

If there is anything you would like us to cover in future Design Forums, please let us know. Also, if you would like to take part and would rather pre-record a session to be uploaded onto YouTube then please get in touch.

It could be any aspect of production design: masterclasses from experts in certain production design skills (tell us which ones you would like to see), a day in the life of one of the BFDG Sponsors, an Art Department team talking about a specific project they are working on... it's an open book!

Just get in touch and tell us what you would like to see. communications@britishfilmdesigners.com



BFDG LOCKDOWN SHORTS

Why not show us what you have been doing during the lockdown !?!

An idea the events committee had this week, which would be a fun and light hearted way to give everyone in the Guild an opportunity to share with the rest of the BFDG Art

Department community, is to record and send us a video of no more than 2 minutes about ***"What you've been doing during lockdown"***.

We will then all the videos from Sponsors and members together and make it available to watch via our YouTube channel.

Your short could be about anything from gardening to learning Irish dancing! We have already had shorts sent in by members about their pets and painting monkeys ... so get your thinking caps on and get creative!

All we ask is that you make your video in landscape and send it as an MP4 file. Send your files to: communications@britishfilmdesigners.com

NFTS

**NATIONAL
FILM AND
TELEVISION
SCHOOL**

THE NFTS VIRTUAL GRADUATE SHOW

The BFDG are pleased to introduce these recent graduates from the National Film and Television School MA in Production Design in a 'Virtual Graduate Show'. These young designers graduated earlier this year and their work was showcased in screenings at the Shaftesbury Avenue Picture House Cinema which was sponsored by Netflix.

We hope to bring you further 'Virtual Graduate Shows' from our other educational sponsors.

ANN KUTZER

Ann Kutzer is an aspiring Production Designer for film and television based in the UK and Ireland. Graduating in 2012, she earned a Bachelor of Arts degree with First-class Honours in Interior and Product Design from University of Wales, UK and a diploma in the same course from Accademia Italiana Design Institute, Italy.

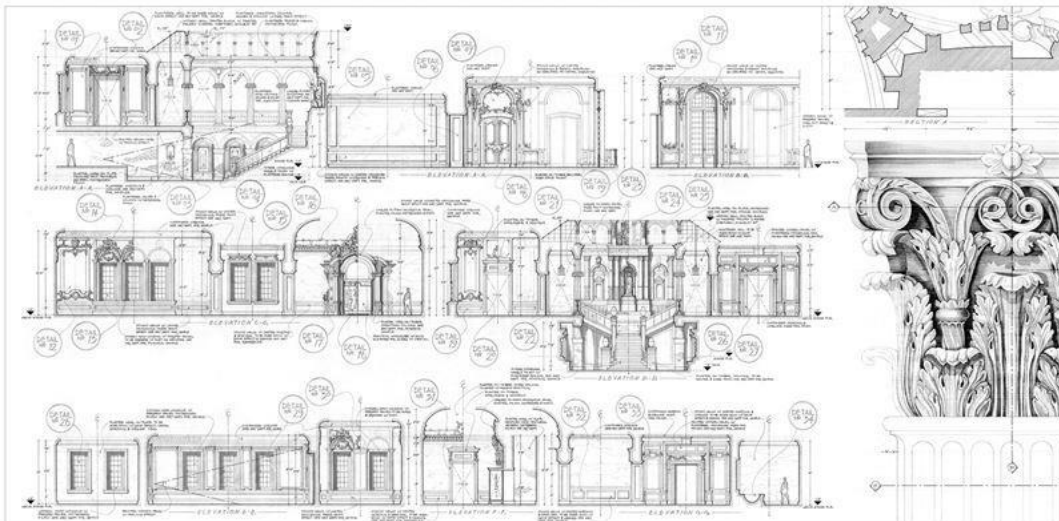
In 2014, she joined a short course in Scenic Art for Theatre at the Royal Academy of Dramatic Art. Ann had been working as interior designer for nearly a decade at numerous international companies based in Thailand.



In 2018 she joined Production Design – Master of Arts course at National Film & Television School and graduated with Distinction in 2020. Ann has been working actively on both live-action and animation films and television series since her graduation. Her most recent credits include Britannia Series 3 and Vikings: Valhalla Series 1.



3D Max Model of Salina Palace – The Leopard (1960s)



Elevations and Detail Hand Drawings of Salina Palace – The Leopard (1960s)



Concept Art for Salina Palace – The Leopard (1960s)

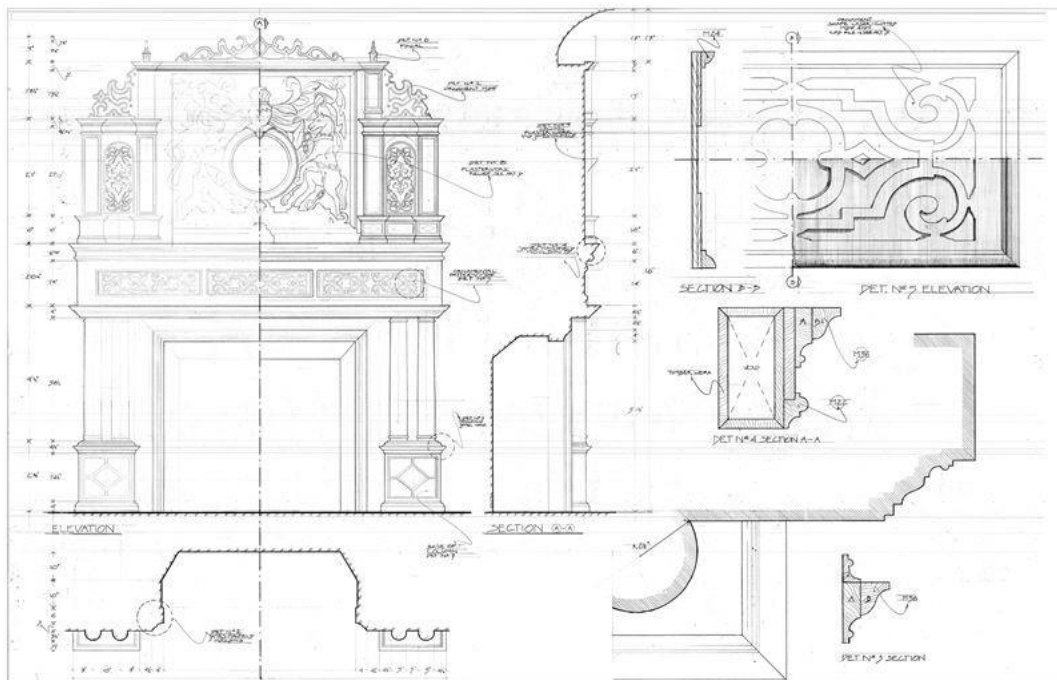


Concept Art for The Night Circus (2086)

ANNA WOLOSZCZUK

Anna is a Polish filmmaker with 8 years of experience working in Art Departments. She moved to the UK to further develop her design skills, where she attended and graduated from the Production Design course at NFTS.

Her most recent work includes the Oscar-nominated film *Cold War* (2018) as an Art Director, she is currently working on the TV series *Britannia*. Anna's main skills include digital painting, hand and CAD drafting and 3D modelling.



Hand Drawing of the Great Hall Fireplace – 'My Cousin Rachel'



The Opening Scene, Graduation Film 'The City of Lost Children' – Concept Art



The Riot Scene, Graduation Film 'The City of Lost Children' – Concept Art



The Accident Scene, Short Film 'Diversion' – Concept Art

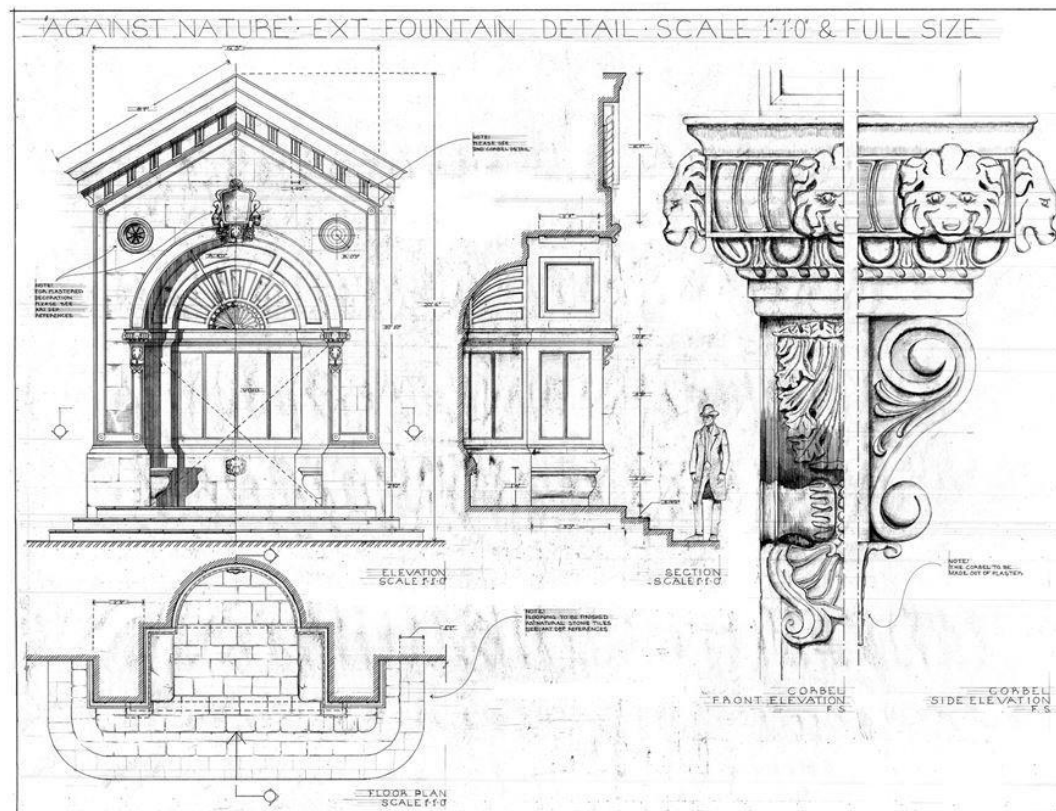
IASONAS HOUSSEIN

Iasonas is a Greek Architect and Junior Draughtsman, with a Master of Arts in Production Design, based in London. He has been working in the British Film and Television Industry since 2019 and is currently employed by Warner Bros. as a Set Dec Draughtsman for the TV series 'The Sandman'.



During his film studies at the National Film and Television School (NFTS) he designed several short films. He has worked on big scale commercials and music videos and has been part of Art Department teams as an Art Department Assistant, a 3D Modeller and a Junior Draughtsman, for big feature films such as Sony's 'Cinderella', 'Death on the Nile', 'The Witches' and 'Star Dream'.

Iasonas holds a 5 year Diploma in Architecture and Engineering from Patras School of Architecture in Greece and before applying to the NFTS in 2017, he spent a year working as a junior architect for internationally renowned architecture firms in Athens, Rotterdam and New York.



Technical Drawing of a Fountain in Paris



3D Model of the Interior of a Parisian Apartment



Physical Model of the Exterior Set of Paris 1900

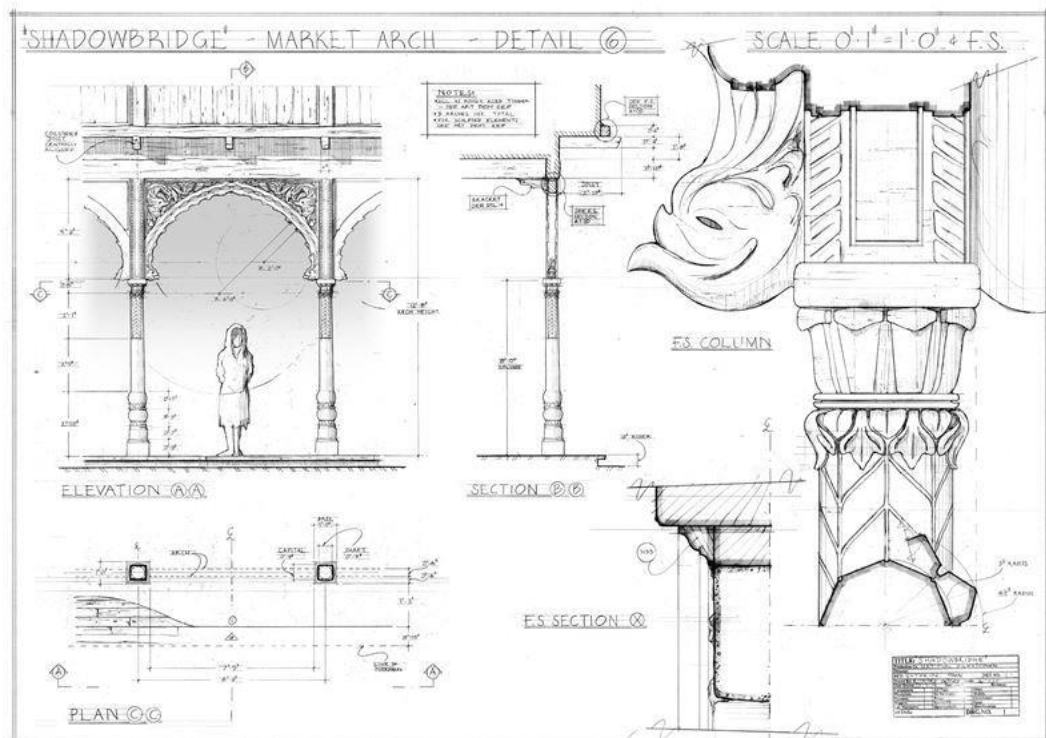


Travel Machine Set Build in an Underground Location

RICHARD HENLEY

Richard came to production design from a broad preoccupation with absorbing and creating visual environments, which he'd previously explored through his background studying illustration. After then spending 3 years working freelance in Set Decorating roles on commercials, he went to the NFTS to hone his technical and creative skills specifically for working in the Art Department.

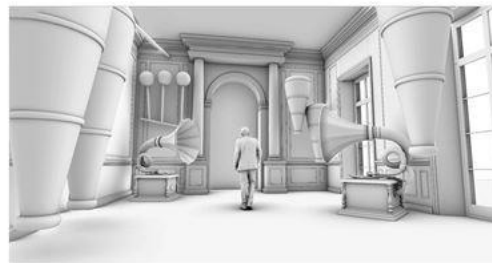
His key skills are hand-draughting and CAD, as well as 3D modelling and white card model making. He loves bringing drawings to life through concepts and has a broad knowledge of Photoshop and Indesign. Richard is now interested in pursuing both Set Decoration, Draughting and roles in the main Art Department, having worked as a Set Decoration Draughtsperson on a production at Pinewood earlier this year.

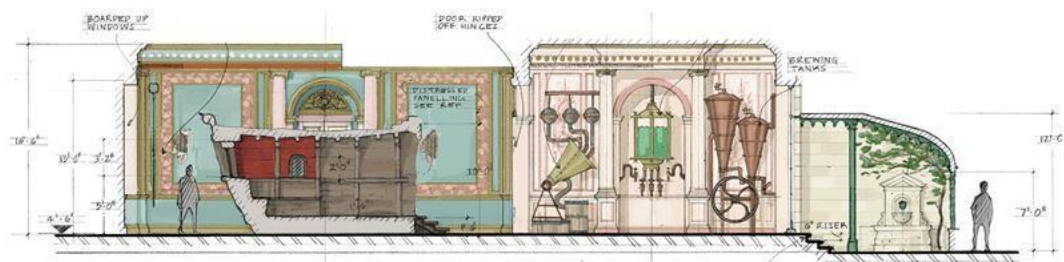


'Shadowbridge' Market Arch – Detail



'Shadowbridge' - Concept Art, Photoshop Digital Painting





'Against Nature' - Hand-drawn Elevation; Concept in Charcoal with Digital Colour; 3D Model in Rhino



'The Prophecy' - Concept Art, Digital Painting Based on 3D Model

STEVEN XUEREB HABER

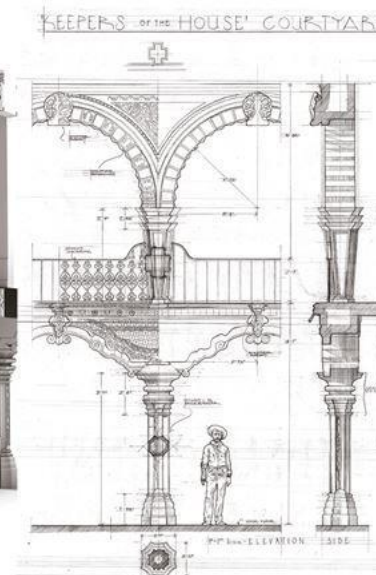
Steven Xuereb Haber (London) is a Draughtsman and a former architect with a background in theatre set design and illustration. After completing a Masters in Architectural Design, he attended the National Film and Television School to obtain an MA in Production Design.

During that period he worked as a Production Designer on several short films and stop-motion animations. This involved designing and set decorating for both studio set-builds and locations while managing an art department team, budget and logistics.

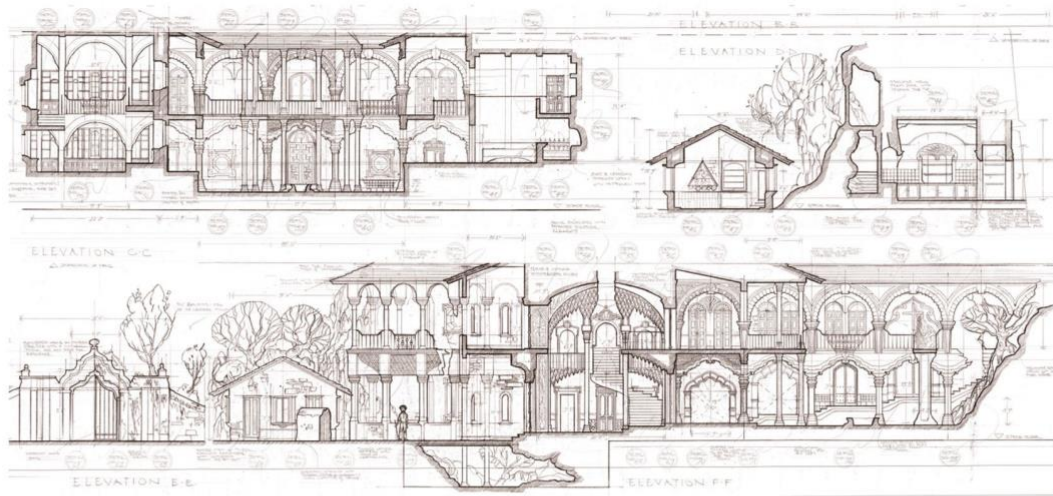
Since graduating, he has worked as a Draughtsman, 3D modeller, Concept Artist and Storyboard Artist on a number of feature films by Universal Pictures, Sony Pictures, Warner Bros., Bigscope and Silver Reel. Steven is proficient in 3D modelling, hand / digital draughting, model-making and concept art.



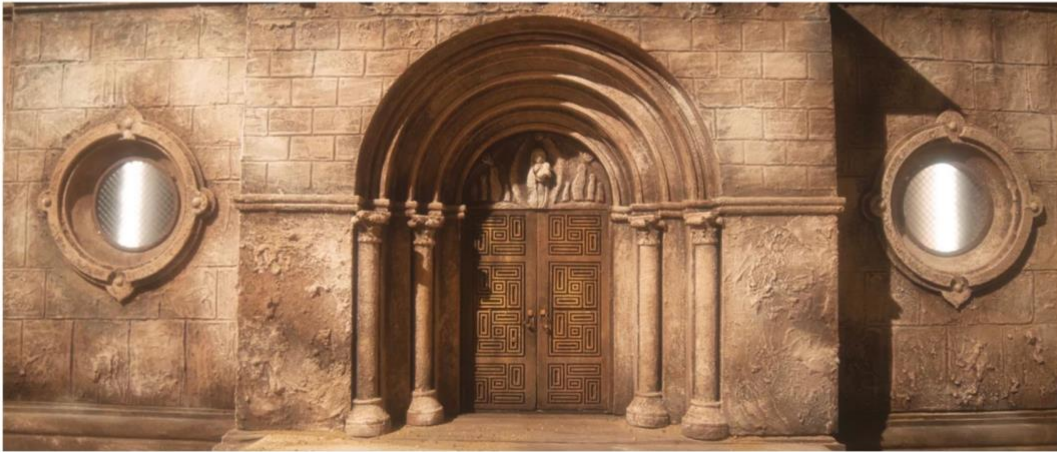
3D Visualisation and Detail of Venezuelan Hacienda based on book 'The Keepers of the House'



Set Design for a Magical-realism Short Film 'The Door'



Section Drawings of Venezuelan Hacienda based on book 'The Keepers of the House'



Film Set of Romanesque Chapel for Stopmotion Animation 'The Song of a Lost Boy'

MY WORKING FROM HOME LIFE:

BFDG PRODUCTION DESIGNER SIMON BOWLES TELLS US ABOUT THE EXCITING 'TALKING HEADS' PRODUCTION HE HAS BEEN WORKING ON DURING LOCKDOWN

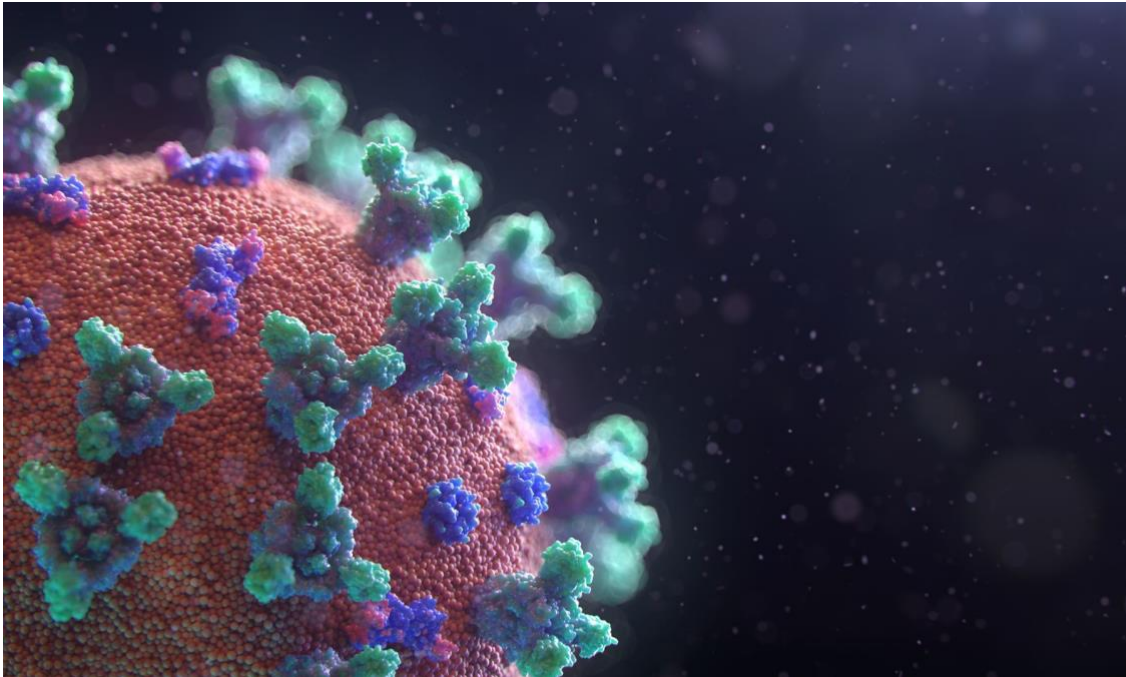


The Covid 19 lockdown started while my team and I were designing and building the sets for season two of Avenue 5, based at Warner Brothers Studios, Leavesden. We were three months away from shooting so had sets partially finished some sets. As the virus took hold of the country, we started social distancing, telling construction crew not to come in if they or a family member felt unwell and asked members of our art department to work from home. Then when lockdown actually took hold the production was put on hiatus with a few weeks pay to allow everyone to move their belongings home (scheduled so only one person at a time was collecting their kit from the open plan office), finish off what they were drawing at home and file it on the shared HBO cloud system.

It was at this point that Avenue 5 producer Kevin Loader approached me to work on an extraordinary project planning to film Alan Bennett's twelve Talking Heads monologues in just a few weeks time during lockdown, in conjunction with the BBC and the London Theatre Company.

The BBC had suggested we use their standing sets at their Elstree studios just outside London. I was delighted to recce the iconic sets at the studios and choose which would work for each monologue.

To read the full article click [here](#)



COVID 19 - UPDATE

INFORMATION AS WE GET IT...

We are constantly keeping track of the information provided by the Government as well as organisations such as BECTU, the BFI and the Film and TV Charity so that we can pass it on to our members.

RETURNING TO WORK SAFELY

The government has recently confirmed that film and TV production can restart within social distancing guidelines. Read more [here](#).

BECTU have recently run a live webinar about Returning to Work Safely and can be on YouTube (in 2 parts due to a technical hitch): <https://youtu.be/10mHW1j4wyE>
<https://youtu.be/iLQ0wMAywOM>

Locations Experts discuss how the film industry can prepare for safe filming again. Watch the video [here](#).

This is the Government's Official document about safe working in offices which will apply to the Art Department: [Government Doc](#)

Our full list of COVID guidance and information can be found [here](#).

We are also posting the latest information we receive on the BFDG Facebook and Twitter @BFDG_Film_Guild

WRITE TO YOUR MP...

If you would like to write to your MP about those people who have been left out of the Governments financial aid package, please use the template that can be downloaded [here](#). Please remember to add in your MP's name and address as well as your own name and address.

We will keep you updated with any news that we receive on this.

PLEASE KEEP SHARING YOUR FILM INDUSTRY NEWS AND EXPERIENCES OF NAVIGATING THE FINANCIAL HELP AVAILABLE...

Please let us have your experiences, in this very difficult time which we can share with other members. We can be publish directly from you or anonymously if you prefer... so please send your experiences into the office... [office email link](#)



VECTORWORKS
A NEMETSCHEK COMPANY

NEW WAYS TO HELP YOU WITH SUPPORT AND TRAINING DURING LOCKDOWN

On behalf of Vectorworks, I want to let you know that our thoughts continue to be with all of those who have been affected by COVID-19. From work to home life, everything has changed for all of us. Two months in and hopeful about the small improvements we're seeing, our priority continues to be supporting our customers and our employees to ensure business continuity and provide you with the best experience possible.

As part of that, we're adding new ways to help you with support and training – in case you missed it:

- **The 2020 Vectorworks Design Summit:** Although we made the difficult decision to cancel the Vectorworks Design Summit, we're excited to bring it to you virtually.

You can watch the keynote sessions including one from Vectorworks CEO, Dr. Biplab Sarkar, and view recorded learning sessions [here](#).

- **New FREE online training options:** To empower you to stay productive during this time, our training team has been releasing exclusive new content for you, free of charge. These together with new sessions covering Braceworks and ConnectCAD can be found [here](#).
- **Resources for working remotely with Vectorworks:** We've increased the number of E Series licence activations by one to better accommodate our customers' ability to work from home. For more information and tips on working from home with Vectorworks, please visit this [forum article](#). You can also view our Working from Home Webinar [here](#).

We are here if you need us – and will continue to focus on providing resources, training, and support to serve the design community. For those needing to upgrade or buy software right now, we are offering **30% off all Vectorworks purchases and extended payment terms**.

Please do not hesitate to contact us with any questions or concerns you have and we will do our best to help you.

Stay safe,

Adrian Slatter

UK Director of Sales

MEMBERS' WORK - NEW RELEASES

Although many releases have been postponed for now, there are still some due to be streamed on the various TV Networks. So if you have worked on a production that will be released in the next few weeks please get in touch with the details.

This feature relies on our members keeping us up to date with what you are working on and letting us know when it is released so that it can be included here. We particularly need your help with TV releases as it is harder for us to track these across all of the different networks.

If we have missed a production or omitted anyone from the list it is not intentional, please get in touch so that we can put it right!

NEW RELEASES

PLEASE SEND IN ANY NEW RELEASES FOR MAY

CODE 404

TV Production for Sky One / NOW TV

Weds 29th April

Julian Nagel - PD

Jo White - AD

Jane Dundas - SD

MEMBERS' AVAILABILITY LIST:

An updated list of our current available Members -

Should you wish to find out more or contact a member, please click on the link provided to view their Personal Profile.

If you would like to publicise yourself here or inform us that you have recently started a job and would like to be removed from the list then please contact Sophie Jones at memberships@britishfilmdesigners.com.

~ PRODUCTION DESIGNER | PD ~

[Profile](#) | David Bryan - PD.

[Profile](#) | Jamie Lapsley - PD.

[Profile](#) | Peter Francis - PD.

~ TELEVISION PRODUCTION DESIGNER | PD TV ~

[Profile](#) | Bruce Hill - PD Commercials & Art Director (Features).

[Profile](#) | Caroline Story - PD Commercials & Art Director

[Profile](#) | Catrin Meredydd - PD TV.

[Profile](#) | Elizabeth Mary Moore - PD TV.

~ SUPERVISING ART DIRECTOR | SAD ~

[Profile](#) | Adam O'Neill - SAD
[Profile](#) | Caroline Barclay - SAD.
[Profile](#) | Fabrice Spelta - SAD.
[Profile](#) | Katie MacGregor - SAD.

~ ART DIRECTOR COMMERCIALS | ADc ~

[Profile](#) | Caroline Story - ADc

~ SENIOR ART DIRECTOR | Snr AD ~

No members currently listed as available.

~ ART DIRECTOR | AD ~

[Profile](#) | Blair Barnette - AD.
[Profile](#) | Bruce Hill - PD Commercials & Art Director (Features).
[Profile](#) | Caroline Barclay - AD
[Profile](#) | Darren Tubby - AD.
[Profile](#) | Guy Bevitt - AD/Stby AD.
[Profile](#) | John West - AD.
[Profile](#) | Laura Pozzaglio - AD.
[Profile](#) | Malcolm Stone - AD/SD.
[Profile](#) | Martin Kelly - AD.
[Profile](#) | Tamara Marini - AD, willing to travel.

~ STANDBY ART DIRECTOR | Stby AD ~

[Profile](#) | Guy Bevitt - AD/Stby AD.
[Profile](#) | Lizzy Wheeler - AD/Stby AD.

~ CONCEPT ARTIST | CA ~

[Profile](#) | Arnaud Valette - CA. | [Website](#)
[Profile](#) | Jeffrey Read - CA.
[Profile](#) | Jens Fiedler - A/CA.
[Profile](#) | Illia Boccia - CA.
[Profile](#) | Ulrich Zeidler - CA.

~ STORYBOARD ARTIST | SA ~

[Profile](#) | Alex Clark - SA. | ac.storyboards@gmail.com | [Website](#)
[Profile](#) | James O'Shea - SA.
[Profile](#) | Jim Cornish - SA.
[Profile](#) | John Colebourn - SA. | [Website](#)
[Profile](#) | Stephen Forrest-Smith - SA.
[Profile](#) | Stephen Harris - SA.

~ SCENIC ARTIST | Sc A ~

No members currently listed as available.

~ CONSTRUCTION MANAGER | CM ~

[Profile](#) | John Foster - CM.
[Profile](#) | Steve Patterson - CM. | [Website](#)

~ ASSISTANT ART DIRECTOR | AAD ~

[Profile](#) | Anna Czerniavska - Jnr D/AAD TV.
[Profile](#) | Chris Evans-Wilson - AAD.
[Profile](#) | Christine Lois - AAD.
[Profile](#) | Daniel Kennedy - AAD.
[Profile](#) | Eleonore Cremonese - AAD.

[Profile](#) | Gregory Hewitt - AAD.
[Profile](#) | Heather Noble - AAD.
[Profile](#) | Lili Lea Abraham - ADA/Jnr D/AAD.
[Profile](#) | Maggie Srmayan - AAD.

~ MODELLER/SCULPTOR/CONCEPT MODEL MAKER | M/S/CMM ~

[Profile](#) | Robert Bean - M/S/CMM, available from May 2020.

~ PORTRAIT & PASTICHE PAINTER | PP ~

[Profile](#) | Desmond Mac Mahon - PP.

~ SENIOR DRAUGHTSPERSON/SENIOR SET DESIGNER | Snr D/SDes ~

No members currently listed as available.

~ DRAUGHTSPERSON/SET DESIGNER | D/SDes ~

[Profile](#) | Anna Czerniavska - ADA/D, with experience as AAD TV.

[Profile](#) | Daniel Gomme - D/SDes.

~ JUNIOR DRAUGHTSPERSON/JUNIOR SET DESIGNER | Jnr D/Jnr SDes ~

[Profile](#) | Anna Czerniavska - Jnr D/AAD TV.

[Profile](#) | Antonio Niculae - A/Jnr D.

[Profile](#) | Gyorgy Siman - A, with experience as GD/Motion GD & Jnr SDes.

[Profile](#) | Liam Bright - A/ADA/Jnr D.

[Profile](#) | Lili Lea Abraham - ADA/Jnr D/AAD.

[Profile](#) | Magdalena Kronenberg-Seweryn - A/Jnr D.

[Profile](#) | Victoria Johnson - A/Jnr D.

~ RESEARCHER | R ~

[Profile](#) | Karen Krizanovich - R, incl. clearances for Art Dept.

~ MODEL MAKER | MM ~

No members currently listed as available.

~ ART/CONSTRUCTION/SET DEC DEPT. COORDINATOR | ADC/CDC/SDC ~

[Profile](#) | Kate Lowry - SDC.

[Profile](#) | Julie Wicks - A/ADC.

~ SET DECORATOR | SD ~

[Profile](#) | Annalisa Andriani - SD.

[Profile](#) | Casey Williams - SD.

[Profile](#) | Claudia Parker - SD.

[Profile](#) | Emma Davis - SD.

[Profile](#) | Gordon Grant - SD.

[Profile](#) | Jo Stuart-Fox - SD. | [Website](#)

[Profile](#) | Julie Signy - SD

[Profile](#) | Kevin Downey - SD.

[Profile](#) | Kimberley Fahey - Snr ASD/SD.

[Profile](#) | Kimberley McBeath - SD.

[Profile](#) | Laura Marsh - SD.

[Profile](#) | Malcolm Stone - AD/SD.

[Profile](#) | Marian Murray - SD.

[Profile](#) | Rebecca Gillies - SD.

[Profile](#) | Sara Neighbour - SD.

~ PRODUCTION BUYER | PB ~

[Profile](#) | Hannah Gawthorpe - PB, with Jnr/ASD experience.

[Profile](#) | Oli Novadnieks - PB.

[Profile](#) | Terry Jones - PB.

~ ASSISTANT SET DECORATOR | ASD ~

[Profile](#) | Camila Higgs - ASD.

[Profile](#) | Kimberley Fahey - Snr ASD/SD.

~ ASSISTANT PRODUCTION BUYER | APB ~

[Profile](#) | Jessica Leijh - APB.

[Profile](#) | Orlaith Kelly - APB.

~ PETTY CASH BUYER | PCB ~

[Profile](#) | Anaïs Delpech - A/PCB.

[Profile](#) | Clarissa Livock - A/PCB/AGD.

[Profile](#) | Emma Rosling - SDA/PCB.

[Profile](#) | Julie Bemment - A/ADA/PCB.

~ GRAPHIC DESIGNER/DECOR ARTIST | GD/DA ~

[Profile](#) | Damian Draven - GD/DA.

[Profile](#) | Florence Tasker - GD.

[Profile](#) | Katie Harvey - GD/Stby AD.

[Profile](#) | Marco De Matteo - GD.

[Profile](#) | Shade Addams - GD.

[Profile](#) | Sophie Powell - GD/DA

~ ASSISTANT GRAPHIC DESIGNER | AGD ~

[Profile](#) | Clarissa Livock - A/PCB/AGD.

[Profile](#) | Marcia Doyle - A/AGD.

[Profile](#) | Sian Lipscomb - A/AGD.

~ ART/SET DEC/BUYING DEPARTMENT ASSISTANT | ADA/SDA/PBA ~

[Profile](#) | Alberto Achar - ADA/SDA.

[Profile](#) | Ana Baltova - A/ADA.

[Profile](#) | Andrea Stern - ADA.

[Profile](#) | Anna Czerniavska - ADA/D, with experience as AAD TV.

[Profile](#) | Emma Rosling - SDA/PCB.

[Profile](#) | Emma Ryder - ADA/Jnr D, with experience as AAD TV.

[Profile](#) | Florian Bonte - A/ADA, with experience as Props Draughtsperson.

[Profile](#) | Julie Bemment - A/ADA/PCB. | [Website](#)

[Profile](#) | Kate Hefferman - A/SDA.

[Profile](#) | Liam Bright - A/ADA/Jnr D.

[Profile](#) | Lili Lea Abraham - ADA/Jnr D/AAD.

[Profile](#) | May Davies - ADA, with AAD experience.

[Profile](#) | Molly Tebbutt - A/ADA.

[Profile](#) | Rachel Cook - A/ADA.

[Profile](#) | Rowena Zoro - A/SDA.

~ AFFILIATE | A ~

[Profile](#) | Amber Weerasinghe - A.

[Profile](#) | Ana Baltova - A/ADA.

[Profile](#) | Anaïs Delpech - A/PCB.

[Profile](#) | Antonio Niculae - A/Jnr D.

[Profile](#) | Clarissa Livock - A/PCB/AGD.

[Profile](#) | Elizabeth Martin Kent - A.
[Profile](#) | Florian Bonte - A/ADA, with experience as Props Draughtsperson.
[Profile](#) | Gyorgy Siman - A, with experience as GD/Motion GD & Jnr SDes.
[Profile](#) | Jens Fiedler - A/CA.
[Profile](#) | Julie Bemment - A/ADA/PCB. | [Website](#)
[Profile](#) | Julie Wicks - A/ADC.
[Profile](#) | Kate Hefferman - A/SDA.
[Profile](#) | Kate Logan - A.
[Profile](#) | Liam Bright - A/ADA/Jnr D.
[Profile](#) | Magdalena Kronenberg-Seweryn - A/Jnr D.
[Profile](#) | Marcia Doyle - A/AGD.
[Profile](#) | Molly Tebbutt - A/ADA.
[Profile](#) | Octavia Crawford Collins - A.
[Profile](#) | Philip Donaldson - A. | [Website](#)
[Profile](#) | Rachel Cook - A/ADA.
[Profile](#) | Rosa Harton - A, with experience as Jnr ASD.
[Profile](#) | Rose Konstam - A.
[Profile](#) | Rowena Zoro - A/SDA.
[Profile](#) | Sian Lipscomb - A/AGD.
[Profile](#) | Victoria Johnson - A/Jnr D.
[Profile](#) | Yasmina Van de Peer - A.
[Profile](#) | Zoe Hurwitz - A.



info@britishfilmdesigners.com
memberships@britishfilmdesigners.com
communications@britishfilmdesigners.com

BFDG Club Admin Room 75A Pinewood Studios
Pinewood Road, Iwer Health, Bucks, SL0 0HN, U

Company Registration No. 01680561
VAT Registration No. 345038707